

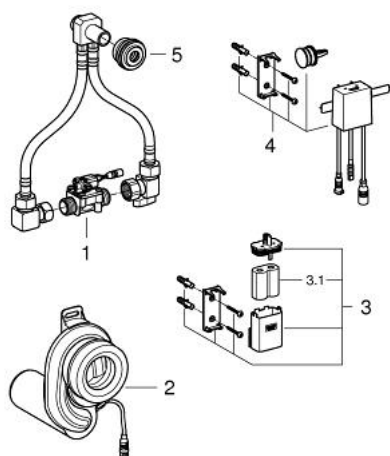
## 39 367 000 TEMPERATURE SENSOR FOR URINAL



### TOOTE KIRJELDUS

- 6 V lithium battery, type CR-P2
- with water connection set and stop valve
- siphon with temperature sensor
- cartridge with solenoid valve and dirt strainer
- flow pressure min 0.5 bar
- operating pressure max 10 bar
- 7 pre-set programs:
  - auto flush
  - cleaning mode
  - pre-flush on/off
- CE approved
- only for certain urinal ceramics, check online TPI

## 39 367 000 TEMPERATURE SENSOR FOR URINAL



### VARUOSAD, aprill 2015 – nüüd

- 1: Solenoid valve (Tellimuse number 42476000)
- 2: Waste trap (Tellimuse number 42477000)
- 3: Battery housing (Tellimuse number 42393000)
- 3.1: Battery (Tellimuse number 42886000)
- 4: Electronic (Tellimuse number 42478000)
- 5: Lip seal (Tellimuse number 4387500M)