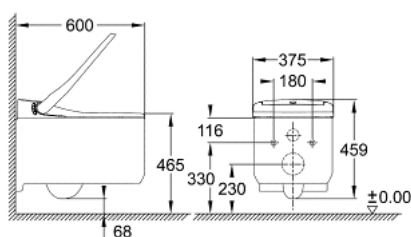


## 39 354 SH1 GROHE SENSIA ARENA SHOWER TOILET COMPLETE SYSTEM FOR CONCEALED FLUSHING CISTERNS, WALL-HUNG



### TOOTE KIRJELDUS (1/2)

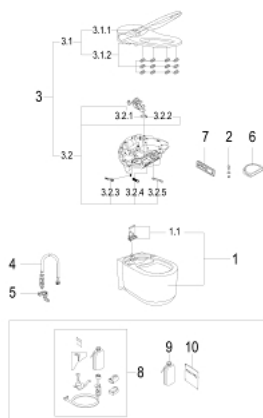
- Värvus: alpine white
- GROHE Hygiene GROHE antibacterial glazing SIAA Kokin Japanese standard compliant) and anti stick coating ceramic appliance with Aquaceramics technology
- GROHE power flush: rimless wash down jet WC with GROHE Triple Vortex flushing technology
- GROHE Skin Clean:
  - 2 dedicated adjustable spray arms (1 for rear spray, 1 for lady spray)
  - separate water way for lady spray
  - oscillating spray (automatic forward and reverse motion of the spray)
  - pulsating spray for massage
  - adjustable spray intensity
  - automatic pre- and post-rinsing of spray nozzle with fresh water
- integrated instant heater provides unlimited warm water
- adjustable temperature
- Other functions
  - warm air dryer with adjustable temperature
  - odor extraction with filter
  - PlasmaCluster function - ion technology
  - descaling function
  - Duroplast WC seat and lid with automatic opening/close function
  - infra-red user detection
  - seat control operation
  - power switch
  - inside bowl night light
  - hidden water supply and power supply connections
  - remote control
  - smart phone app for iOS and Android
- includes:
  - noise protection sheet, mounting bases and washers
  - manual remote controller with wall-mounted holder
  - active carbon filter for odour absorption
  - water supply connection set for concealed cistern

## 39 354 SH1 **GROHE SENSIA ARENA SHOWER TOILET COMPLETE SYSTEM FOR CONCEALED FLUSHING CISTERNS, WALL-HUNG**

### **TOOTE KIRJELDUS** (2/2)

- nozzle guard
- cable with system plug on device
- pressure 0.05 - 1 MPa (0.5 - 10 bar)
- nominal voltage 220-240 V AC
- main frequency 50-60 Hz
- type of protection IPX4
- complies with EN 1717
- CE approved
- recommended in combination with a GROHE Rapid SLX element (1,13 m installation height)

## 39 354 SH1 GROHE SENSIA ARENA SHOWER TOILET COMPLETE SYSTEM FOR CONCEALED FLUSHING CISTERNS, WALL-HUNG



**VARUOSAD**, august 2017 – nüüd

- 1: WC-ceramic (Tellimuse number 14937000)
- 1.1: Fixing member rear (Tellimuse number 14969000)
- 2: Anti-theft screw (Tellimuse number 14972000)
- 3: E-bidet unit (Tellimuse number 14976000)
- 3.1: Cover (Tellimuse number 14979000)
- 3.1.1: WC lid (Tellimuse number 14925SH0)
- 3.1.2: WC seat (Tellimuse number 14924SH0)
- 3.2: Base plate assembly (Tellimuse number 14978000)
- 3.2.1: Spray (Tellimuse number 14929000)
- 3.2.2: Spray (Tellimuse number 14928000)
- 3.2.3: Filter (Tellimuse number 14927000)
- 3.2.4: Air filter (Tellimuse number 14933000)
- 3.2.5: Nozzle guard (Tellimuse number 14930000)
- 4: Connection hose assembly (Tellimuse number 14974000)
- 5: Hose clip (Tellimuse number 14971000)
- 6: Splash protection (Tellimuse number 14936000)
- 7: Remote control (Tellimuse number 14926001)
- 7: Remote control (Tellimuse number 14926002)
- 8: Descaling kit (Tellimuse number 46978001)\*
- 9: Descaler bottle (Tellimuse number 46979000)\*
- 10: Descaler for shower toilet (Tellimuse number 4697700M)\*

\* Lisatarvikud