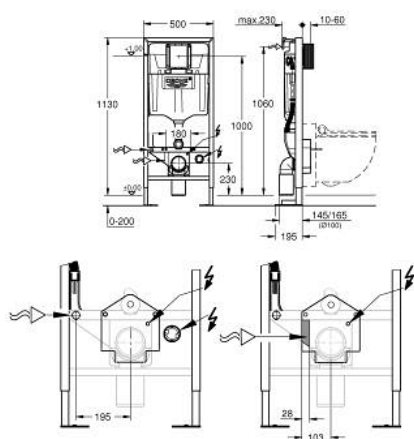


39 128 001 **RAPID SL ELEMENT FOR GROHE SENSIA SHOWER WCS, 1.13 M INSTALLATION HEIGHT**

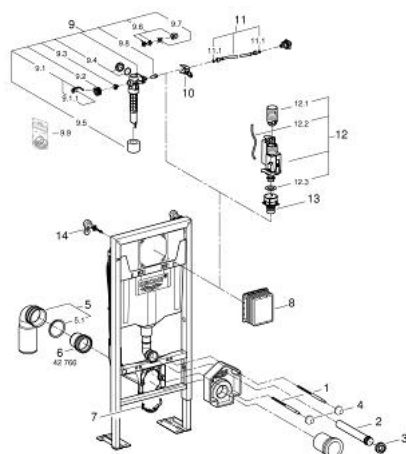


TOOTE KIRJELDUS

- with flushing cistern GD 2, 6 - 9 l
- PVC outlet bend Ø 90 mm
- flushing cistern GD 2, 6 - 9 l, containing following features:
- including wall brackets 38 558 00M for on-the-wall installation
- concealed socket for mains supply
- for mounting of small flush plates please order revision shaft 40 911 000 (sold separately)



39 128 001 **RAPID SL ELEMENT FOR GROHE SENSIA SHOWER WCS, 1.13 M INSTALLATION HEIGHT**



VARUOSAD, september 2015 – nüüd

- 1: Threaded bolt (Tellimuse number 4276400M)
- 2: Wall union (Tellimuse number 43352000)
- 3: Connector (Tellimuse number 37119000)
- 4: Basin fastening (Tellimuse number 43511000)
- 5: PVC waste bend (Tellimuse number 42216000)
- 5.1: Sealing washer (Tellimuse number 4207700M)
- 6: Distance pipe 3" (Tellimuse number 42766000)
- 7: Support for outlet bend (Tellimuse number 42243000)
- 8: Inspection shaft (Tellimuse number 66791000)
- 9: Filling valve (Tellimuse number 37095000)
- 9.1: Lever (Tellimuse number 43734000)
- 9.1.1: Seal (Tellimuse number 4377000M)
- 9.2: Valve head (Tellimuse number 43536000)
- 9.3: Membrane (Tellimuse number 4375800M)
- 9.4: Screw cap (Tellimuse number 43735000)
- 9.5: Valve float, 5 pcs. (Tellimuse number 4379100M)
- 9.6: Set of seals (Tellimuse number 43722000)*
- 10: Support device (Tellimuse number 42246000)
- 11: Tube (Tellimuse number 42233000)
- 11.1: Sealing washer (Tellimuse number 0319100M)
- 12: Dual Flush discharge valve AV1 (Tellimuse number 42320000)
- 12.1: Extension for overflow pipe (Tellimuse number 42313000)
- 12.2: Pneumatic hose (Tellimuse number 42319000)
- 12.3: Seal (Tellimuse number 42310000)
- 13: Valve seat for GD2 (Tellimuse number 42315000)
- 14: Wall brackets (Tellimuse number 3855800M)

* Lisatarvikud