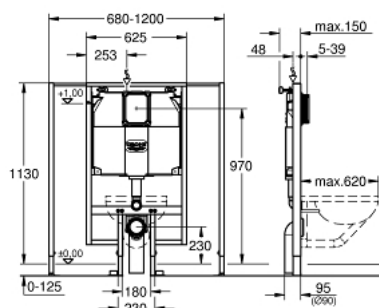


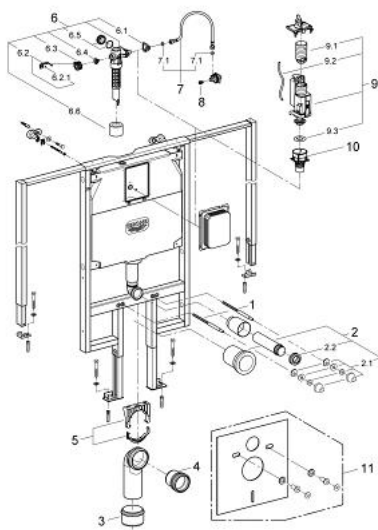
## 38 995 000 **RAPID SL ELEMENT FOR WC WITH FLUSHING CISTERN 80 MM, VARIABLE WIDTH**



### TOOTE KIRJELDUS

- 1.13 m installation height
- for small, narrow bathrooms
- variable element width 0.70 – 1.20 m
- for on the wall installation
- powder coated steel frame, self-supporting
- for dry-cladding, completely pre-assembled
- with fixed connections
- quick adjustment, lockable
- fixing material
- TÜV approved
- 2 WC fixing bolts
- fixing device for ceramic
- distance of fixing bolts 180/230 mm
- PP outlet bend Ø 90 mm
- depth adjustable
- PP reducer Ø 90/110 mm
- inlet and outlet connecting set
- flushing cistern 80 mm, 6 - 9 l, containing following features:
  - adjustment ex factory 6 l and 3 l
  - pneumatic discharge valve offering 3 modes of operation: dual flush or start/stop or single flush
- water supply from top
- low noise (group I acc. to German Noise Specification)
- insulated against condensation
- water supply ½" and push fit flexible hose union
- no tools required for the installation of the inspection shaft incl. protection during construction phase
- for vertical use
- including wall brackets 38 558 00M for on-the-wall installation

## 38 995 000 **RAPID SL ELEMENT FOR WC WITH FLUSHING CISTERN 80 MM, VARIABLE WIDTH**



### **VARUOSAD**, juuli 2012 – nüüd

- 1: Threaded bolt (Tellimuse number 4276400M)
- 2: WC inlet and outlet connecting set (Tellimuse number 37311K00)
- 2.1: Basin fastening (Tellimuse number 43511SH0)
- 2.2: Connector (Tellimuse number 37119000)
- 3: Reducer (Tellimuse number 42242000)
- 4: Distance pipe 3" (Tellimuse number 42766000)
- 5: Support for outlet bend (Tellimuse number 42243000)
- 6: Filling valve (Tellimuse number 43991000)
- 6.1: Valve support (Tellimuse number 43995000)
- 6.2: Lever (Tellimuse number 43734000)
- 6.2.1: Seal (Tellimuse number 4377000M)
- 6.3: Valve head (Tellimuse number 43536000)
- 6.4: Membrane (Tellimuse number 4375800M)
- 6.5: Screw cap (Tellimuse number 43735000)
- 6.6: Valve float, 5 pcs. (Tellimuse number 4379100M)
- 7: Tube (Tellimuse number 42233000)
- 7.1: Sealing washer (Tellimuse number 0319100M)
- 8: Headpart (Tellimuse number 42385000)
- 9: Dual Flush discharge valve AV1 (Tellimuse number 42320000)
- 9.1: Extension for overflow pipe (Tellimuse number 42313000)
- 9.2: Pneumatic hose (Tellimuse number 42319000)
- 9.3: Seal (Tellimuse number 42310000)
- 10: Valve seat for flushing cistern Italy (Tellimuse number 42316000)
- 11: Set for noise protection (Tellimuse number 37131000)\*

\* Lisatarvikud