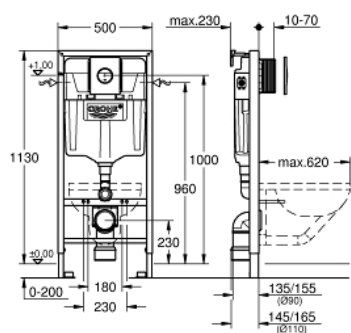


38 832 000 **SOLIDO 3-IN-1 SET FOR WC, 1.13 M INSTALLATION HEIGHT**

TOOTE KIRJELDUS

- Värvus: chrome
- with flushing cistern GD 2, 6 - 9 l
- consisting of:
- Rapid SL element for WC (38 528 001)
- Sail flush plate, chrome (38 965 000)
- 2 wall brackets with fixing material



38 832 000 **SOLIDO 3-IN-1 SET FOR WC, 1.13 M INSTALLATION HEIGHT**



VARUOSAD, juuni 2012 – nüüd

- 1: Threaded bolt (Tellimuse number 4276400M)
- 2: WC inlet and outlet connecting set (Tellimuse number 37311K00)
- 2.1: Basin fastening (Tellimuse number 43511SH0)
- 2.2: Connector (Tellimuse number 37119000)
- 3: PP-outlet bend Ø 90 mm (Tellimuse number 42327000)
- 4: Reducer (Tellimuse number 42242000)
- 5: Support for outlet bend (Tellimuse number 42243000)
- 6: Inspection shaft (Tellimuse number 66791000)
- 7: Filling valve (Tellimuse number 37095000)
- 7.1: Lever (Tellimuse number 43734000)
- 7.1.1: Seal (Tellimuse number 4377000M)
- 7.2: Valve head (Tellimuse number 43536000)
- 7.3: Membrane (Tellimuse number 4375800M)
- 7.4: Screw cap (Tellimuse number 43735000)
- 7.5: Valve float, 5 pcs. (Tellimuse number 4379100M)
- 7.6: Set of seals (Tellimuse number 43722000)*
- 8: Support device (Tellimuse number 42246000)
- 9: Tube (Tellimuse number 42397000)
- 9.1: Sealing washer (Tellimuse number 0319100M)
- 10: Angle valve (Tellimuse number 42396000)
- 11: Connecting box (Tellimuse number 38338000)
- 12: Dual Flush discharge valve AV1 (Tellimuse number 42320000)
- 12.1: Extension for overflow pipe (Tellimuse number 42313000)
- 12.2: Pneumatic hose (Tellimuse number 42319000)
- 12.3: Seal (Tellimuse number 42310000)
- 13: Valve seat for GD2 (Tellimuse number 42315000)
- 14: Wall brackets (Tellimuse number 3855800M)
- 15: Screw (Tellimuse number 6636200M)
- 16: Mounting frame (Tellimuse number 43207000)
- 17: Top plate with push button (Tellimuse number 42375000)
- 18: Retro-fit set (Tellimuse number 38796000)*
- 19: Set for noise protection (Tellimuse number 37131000)*
- 20: 4.5 l adapter for GD2 (Tellimuse number 42333000)*
- 21: Accessory (Tellimuse number 38779000)*
- 22: Xtra wall brackets, flexible placing (Tellimuse number 38733000)*

* Lisatarvikud