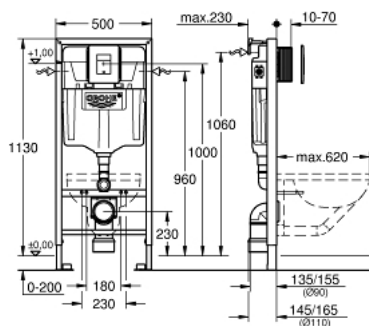


38 827 000 **RAPID SL 5-IN-1 SET FOR WC, 1.13 M INSTALLATION HEIGHT**



TOOTE KIRJELDUS

- Värvus: chrome
- with flushing cistern GD 2, 6 - 9 l
- consisting of:
 - Rapid SL element for WC (38 528 001)
 - Skate Cosmopolitan flush plate, chrome (38 732 000)
 - GROHE Fresh retro-fit set (38 796 000)
 - wall brackets (38 558 00M)
 - including WC set for noise protection (37 131 000)



38 827 000 **RAPID SL 5-IN-1 SET FOR WC, 1.13 M INSTALLATION HEIGHT**



VARUOSAD, juuni 2012 – nüüd

- 1: Threaded bolt (Tellimuse number 4276400M)
- 2: WC inlet and outlet connecting set (Tellimuse number 37311K00)
- 2.1: Basin fastening (Tellimuse number 43511SH0)
- 2.2: Connector (Tellimuse number 37119000)
- 3: PP-outlet bend Ø 90 mm (Tellimuse number 42327000)
- 4: Reducer (Tellimuse number 42242000)
- 5: Support for outlet bend (Tellimuse number 42243000)
- 6: Inspection shaft (Tellimuse number 66791000)
- 7: Filling valve (Tellimuse number 37095000)
- 7.1: Lever (Tellimuse number 43734000)
- 7.1.1: Seal (Tellimuse number 4377000M)
- 7.2: Valve head (Tellimuse number 43536000)
- 7.3: Membrane (Tellimuse number 4375800M)
- 7.4: Screw cap (Tellimuse number 43735000)
- 7.5: Valve float, 5 pcs. (Tellimuse number 4379100M)
- 7.6: Set of seals (Tellimuse number 43722000)*
- 8: Support device (Tellimuse number 42246000)
- 9: Tube (Tellimuse number 42233000)
- 9.1: Sealing washer (Tellimuse number 0319100M)
- 10: Headpart (Tellimuse number 42385000)
- 11: Dual Flush discharge valve AV1 (Tellimuse number 42320000)
- 11.1: Extension for overflow pipe (Tellimuse number 42313000)
- 11.2: Pneumatic hose (Tellimuse number 42319000)
- 11.3: Seal (Tellimuse number 42310000)
- 12: Valve seat for GD2 (Tellimuse number 42315000)
- 13: Wall brackets (Tellimuse number 38558000)
- 14: Retro-fit set (Tellimuse number 38796000)
- 14.1: Mounting frame (Tellimuse number 42358000)
- 14.1.1: Screw (Tellimuse number 6636200M)
- 15: Top plate with push button (Tellimuse number 42371000)
- 16: Set for noise protection (Tellimuse number 37131000)
- 17: 4.5 l adapter for GD2 (Tellimuse number 42333000)*
- 18: Accessory (Tellimuse number 38779000)*
- 19: Xtra wall brackets, flexible placing (Tellimuse number 38733000)*

* Lisatarvikud