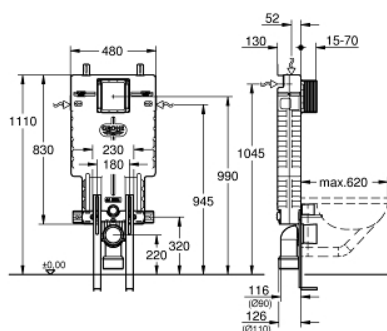


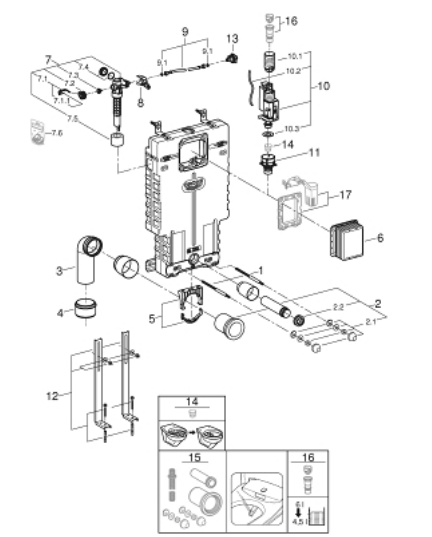
38 642 001 UNISSET ELEMENT FOR WC WITH EPS HOUSING AND SUPPORT FEET



TOOTE KIRJELDUS

- with flushing cistern GD 2, 6 - 9 l
- sound-insulating EPS module for masonry-in
- 830 x 470 x 130 mm
- rail adaptors for modular fixing
- wall rail with fixing accessories for single installation
- 2 WC fixing bolts
- distance of fixing bolts 180/230 mm
- fixing device for ceramic
- outlet bend Ø 90 mm
- depth adjustable
- reducer Ø 90/110 mm
- inlet and outlet connecting set
- flushing cistern GD 2, 6 - 9 l, containing following features:
 - adjustment ex factory 6 l and 3 l
 - pneumatic discharge valve offering 3 modes of operation: dual flush or start/stop or single flush
 - water supply from left/right/back or top
 - low noise (group I acc. to German Noise Specification)
 - insulated against condensation
 - 1/2" water supply connection including integrated angle valve and push fit flexible hose union
- no tools required for the installation of the inspection shaft incl. protection during construction phase
- preparation for shower toilets with additional accessory 40 899 000 (sold separately)
- for mounting of small flush plates please order revision shaft 40 911 000 (sold separately)

38 642 001 UNISET ELEMENT FOR WC WITH EPS HOUSING AND SUPPORT FEET



VARUOSAD, november 2021 – nüüd

- 1: Threaded bolt (Tellimuse number 4276400M)
- 2: WC inlet and outlet connecting set (Tellimuse number 37311K00)
- 2.1: Basin fastening (Tellimuse number 43511SH0)
- 2.2: Connector (Tellimuse number 37119000)
- 3: PP-outlet bend Ø 90 mm (Tellimuse number 42327000)
- 4: Reducer (Tellimuse number 42242000)
- 5: Support for outlet bend (Tellimuse number 42243000)
- 6: Inspection shaft (Tellimuse number 66783000)
- 7: Filling valve (Tellimuse number 37095000)
- 7.1: Lever (Tellimuse number 43734000)
- 7.1.1: Seal (Tellimuse number 4377000M)
- 7.2: Valve head (Tellimuse number 43536000)
- 7.3: Membrane (Tellimuse number 4375800M)
- 7.4: Screw cap (Tellimuse number 43735000)
- 7.5: Valve float, 5 pcs. (Tellimuse number 4379100M)
- 7.6: Set of seals (Tellimuse number 43722000)*
- 8: Support device (Tellimuse number 42246000)
- 9: Tube (Tellimuse number 42233000)
- 9.1: Sealing washer (Tellimuse number 0319100M)
- 10: Dual Flush discharge valve AV1 (Tellimuse number 42320000)
- 10.1: Extension for overflow pipe (Tellimuse number 42313000)
- 10.2: Pneumatic hose (Tellimuse number 42319000)
- 10.3: Seal (Tellimuse number 42310000)
- 11: Valve seat (Tellimuse number 42599000)
- 12: Support feet (Tellimuse number 37304000)
- 13: Water connection (Tellimuse number 48561000)
- 14: Flow restrictor (Tellimuse number 42300000)*
- 15: Retrofit kit for shower toilets Sensia Arena and IGS (Tellimuse number 40899000)*
- 16: 4.5 l adapter for GD2 (Tellimuse number 42333000)*
- 17: Retro-fit set (Tellimuse number 38796000)*

* Lisatarvikud