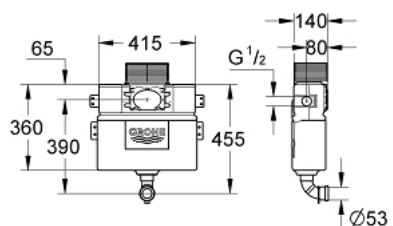


38 422 000 FLUSHING CISTERN FOR WC



TOOTE KIRJELDUS

- 6 - 9 l adjustable
- concealed installation
- 0.82 m installation height
- dual flush discharge valve, pneumatic
- front or top actuation
- water supply from left/right or top
- low noise (group I acc. to German Noise Specification)
- insulated against condensation
- 415 x 410 x 360 mm
- ½" water supply connection
- fixing brackets
- flush pipe
- shortable inspection shaft incl. protection during construction phase
- without wall plate/actuation
- GROHE Water Saving - Less water, perfect flow
- for mounting of small flush plates please order revision shaft 40 950 000 (sold separately)

38 422 000 FLUSHING CISTERN FOR WC



VARUOSAD, juuli 2013 – nüüd

- 1: Headpart (Tellimuse number 42385000)
- 2: Overflow Sleeve (Tellimuse number 43325000)
- 2.1: Sealing washer (Tellimuse number 0319100M)
- 3: Support device (Tellimuse number 42195000)
- 4: Filling valve (Tellimuse number 37095000)
- 4.1: Lever (Tellimuse number 43734000)
- 4.1.1: Seal (Tellimuse number 4377000M)
- 4.2: Valve head (Tellimuse number 43536000)
- 4.3: Membrane (Tellimuse number 4375800M)
- 4.4: Screw cap (Tellimuse number 43735000)
- 4.5: Valve float, 5 pcs. (Tellimuse number 4379100M)
- 4.6: Set of seals (Tellimuse number 43722000)*
- 5: Inspection shaft for flushing cistern (Tellimuse number 42326000)
- 6: Discharge valve AV1 complete (Tellimuse number 42314000)
- 6.1: Pneumatic hose (Tellimuse number 42319000)
- 6.2: Seal (Tellimuse number 42310000)
- 6.3: Valve seat for GD2 (Tellimuse number 42315000)

* Lisatarvikud