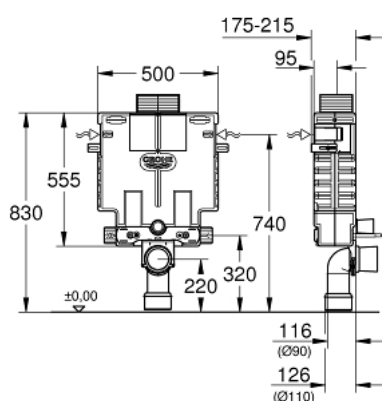


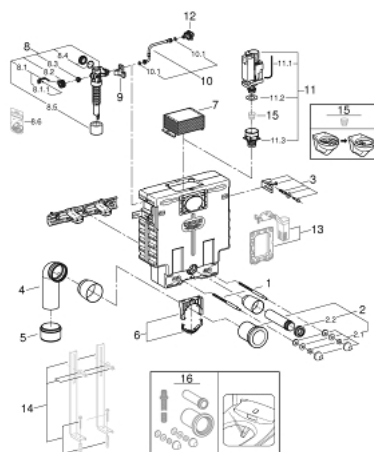
## 38 415 001 UNISET ELEMENT FOR WC, 0.82 M INSTALLATION HEIGHT



### TOOTE KIRJELDUS

- with flushing cistern 6 - 9 l
- front or top actuation
- sound-insulating EPS module for masonry-in
- rail adaptors for modular fixing
- wall rail with fixing accessories for single installation
- 2 WC fixing bolts
- distance of fixing bolts 180/230 mm
- fixing device for ceramic
- outlet bend Ø 90 mm
- depth adjustable
- inlet and outlet connecting set
- flushing cistern 6 - 9 l containing the following features:
  - pneumatic discharge valve offering 3 modes of operation: dual flush or start/stop or single flush
- water supply from left/right or top
- low noise (group I acc. to German Noise Specification)
- insulated against condensation
- 1/2" water supply connection
- angle valve 1/2"
- shortable inspection shaft incl. protection during construction phase
- preparation for shower toilets with additional accessory 40 899 000 (sold separately)
- for mounting of small flush plates please order revision shaft 40 950 000 (sold separately)

## 38 415 001 UNISET ELEMENT FOR WC, 0.82 M INSTALLATION HEIGHT



**VARUOSAD**, november 2021 – nüüd

- 1: Threaded bolt (Tellimuse number 4276400M)
- 2: WC inlet and outlet connecting set (Tellimuse number 37311K00)
- 2.1: Basin fastening (Tellimuse number 43511SH0)
- 2.2: Connector (Tellimuse number 37119000)
- 3: Fastening set, complete, 2 pcs. (Tellimuse number 4276300M)
- 4: PP-outlet bend Ø 90 mm (Tellimuse number 42327000)
- 5: Reducer (Tellimuse number 42242000)
- 6: Support for outlet bend (Tellimuse number 42243000)
- 7: Inspection shaft for flushing cistern (Tellimuse number 42326000)
- 8: Filling valve (Tellimuse number 37095000)
- 8.1: Lever (Tellimuse number 43734000)
- 8.1.1: Seal (Tellimuse number 4377000M)
- 8.2: Valve head (Tellimuse number 43536000)
- 8.3: Membrane (Tellimuse number 4375800M)
- 8.4: Screw cap (Tellimuse number 43735000)
- 8.5: Valve float, 5 pcs. (Tellimuse number 4379100M)
- 8.6: Set of seals (Tellimuse number 43722000)\*
- 9: Support device (Tellimuse number 42195000)
- 10: Overflow Sleeve (Tellimuse number 43325000)
- 10.1: Sealing washer (Tellimuse number 0319100M)
- 11: Discharge valve AV1 complete (Tellimuse number 42314000)
- 11.1: Pneumatic hose (Tellimuse number 42319000)
- 11.2: Seal (Tellimuse number 42310000)
- 11.3: Valve seat for GD2 (Tellimuse number 42315000)
- 12: Water connection (Tellimuse number 48561000)\*
- 13: Retro-fit set (Tellimuse number 38796000)\*
- 14: Support feet (Tellimuse number 37304000)\*
- 15: Flow restrictor (Tellimuse number 42300000)\*
- 16: Retrofit kit for shower toilets Sensia Arena and IGS (Tellimuse number 4089 9000)\*

\* Lisatarvikud