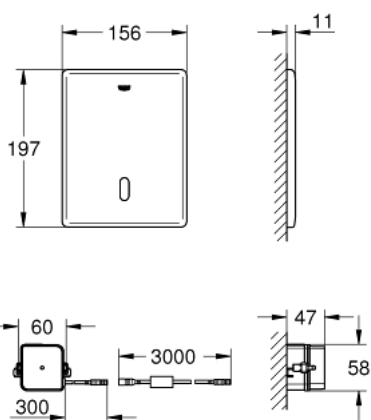
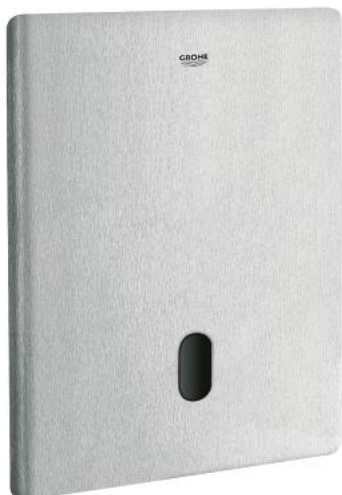


37 505 SD0 TECTRON SKATE BLUETOOTH INFRA-RED ELECTRONIC FOR WC



TOOTE KIRJELDUS (1/2)

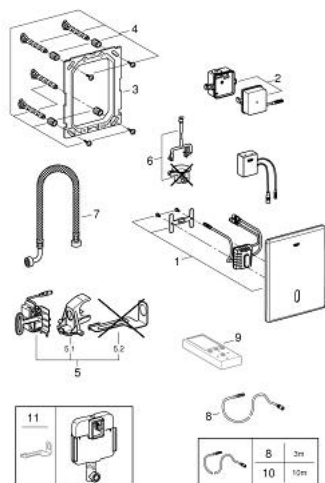
- Värvus: stainless steel
- for flushing cistern GD 2
- with transformer 100-240 V AC, 50-60 Hz, 6.75 V DC
- with infrared sensor and Bluetooth module for bi-directional communication for monitoring, configuration and service purpose
- front plate 156 x 197 mm
- servo motor
- with Bluetooth® 4.0* for wireless data communication
- for Apple** and Android devices
- Bluetooth range (max. 10 m) varies depending on used materials and walls between transmitter and receiver
- monitoring
- password protected products
- app detects all Bluetooth products in range
- auto flush cycles and timing last auto flush
- usage per day / 30 days
- configuration
- detection range and shut off delay
- auto flush
- cleaning mode
- 2 on/off timers
- identification by name
- service
- send and save 3 profiles
- reset to factory or user settings
- hard and software version
- CE approved
- Mobile devices and GROHE IR Remote App*** are not included in delivery and have to be ordered separately via an authorised Apple store/store/iTunes or Google Play store.

37 505 SD0 **TECTRON SKATE BLUETOOTH INFRA-RED ELECTRONIC FOR WC**

TOOTE KIRJELDUS (2/2)

- * The Bluetooth® word mark and logos are registered trademarks owned by Bluetooth SIG, Inc. and any use of such marks by Grohe AG is under license. Other trademarks and trade names are those of their respective owners.
- ** Apple, the Apple logo, iPod, iPod Touch, iPhone and iTunes are trademarks of Apple Inc., registered in the U.S. and other countries. Apple is not responsible for the function of this device or its compliance with safety and regulatory standards.
- *** Available for free via iTunes app or Google Play store.

37 505 SD0 TECTRON SKATE BLUETOOTH INFRA-RED ELECTRONIC FOR WC



VARUOSAD, september 2014 – nüüd

- 1: Top plate (Tellimuse number 42449SD0)
- 2: Switching power supply (Tellimuse number 42470000)
- 3: Mounting frame (Tellimuse number 42736000)
- 4: Fixing set (Tellimuse number 4215800M)
- 5: Servo motor (Tellimuse number 43281000)
- 5.1: Support device (Tellimuse number 42246000)
- 5.2: Motor support device (Tellimuse number 43617000)
- 6: mounting set (Tellimuse number 43306000)
- 7: Hose (Tellimuse number 43307000)
- 8: Extension cable (Tellimuse number 36221000)
- 9: Remote control (Tellimuse number 36407001)*
- 10: Extension cable (Tellimuse number 36222000)*
- 11: Motor support device (Tellimuse number 43617000)*

* Lisatarvikud