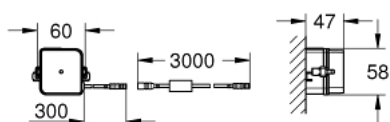
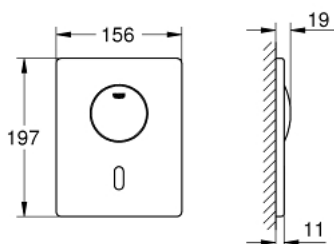


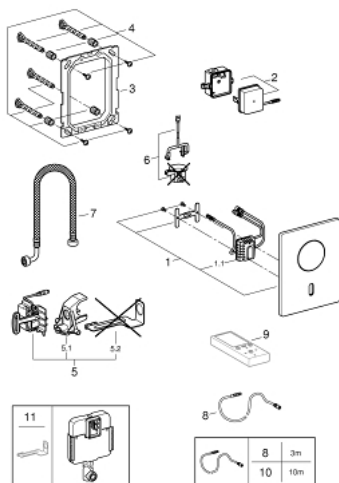
37 419 000 TECTRON SKATE INFRA-RED ELECTRONIC FOR WC FLUSHING CISTERN



TOOTE KIRJELDUS

- Värvus: chrome
- with additional manual actuation
- with infrared sensor for bi-directional communication for monitoring, configuration and service purpose
- GROHE Long-Life finish
- with transformer 100-230 V AC, 50-60 Hz, 6 V DC
- for single flush actuation
- for flushing cistern GD 2
- servo motor
- concealed installation
- hidden fixing screws
- front plate 156 x 197 mm
- 7 pre-set programs:
 - auto flush
 - cleaning mode
 - pre-flush on/off
- additional functions and precise settings by remote control 36 407
- adjustable flush (3 - 9 l) by hand and remote
- CE approved
- for use with Rapid SLX please order shaft 66 791 000 (sold separately)

37 419 000 TECTRON SKATE INFRA-RED ELECTRONIC FOR WC FLUSHING CISTERN



VARUOSAD, aprill 2016 – nüüd

1: Top plate with electronic control (Tellimuse number 42440000)

1.1: Electronic (Tellimuse number 42439000)

2: Switching power supply (Tellimuse number 42470000)

3: Mounting frame (Tellimuse number 42736000)

4: Fixing set (Tellimuse number 4215800M)

5: Servo motor (Tellimuse number 43281000)

5.1: Support device (Tellimuse number 42246000)

5.2: Motor support device (Tellimuse number 43617000)

6: mounting set (Tellimuse number 43306000)

7: Hose (Tellimuse number 43307000)

8: Extension cable (Tellimuse number 36221000)

9: Remote control (Tellimuse number 36407001)*

10: Extension cable (Tellimuse number 36222000)*

11: Motor support device (Tellimuse number 43617000)*

* Lisatarvikud