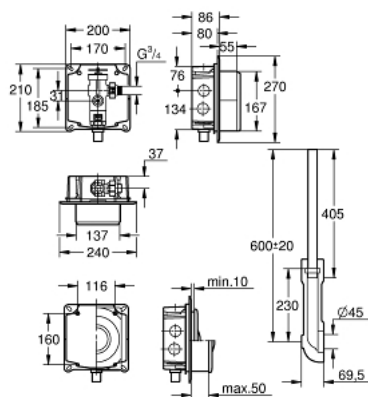


37 153 000 FLUSH VALVE FOR WC

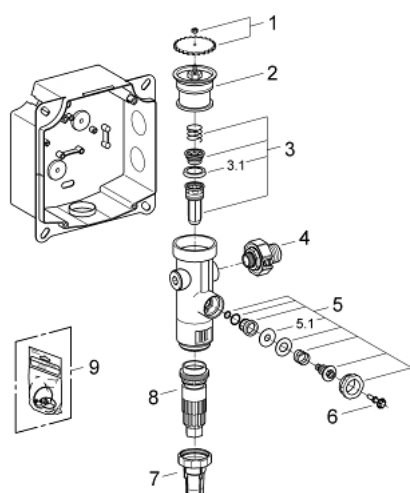


TOOTE KIRJELDUS

- Värvus: chrome
- concealed installation
- 3/4"
- stop valve
- 6 - 9 l adjustable
- flow pressure range from 1.2 - 5.0 bar
- with flow rate adjustment
- box for concealed installation with flush elbow
- flush pipe adjustable in length
- without wall plate/actuation
- low noise (group I acc. to German Noise Specification)



37 153 000 **FLUSH VALVE FOR WC**



VARUOSAD, juuli 2008 – nüüd

- 1: Hand wheel (Tellimuse number 43043000)
- 2: Cover (Tellimuse number 43122000)
- 3: Piston (Tellimuse number 43451000)
- 3.1: Sleeve (Tellimuse number 4376900M)
- 4: Supply stop (Tellimuse number 43405000)
- 5: Safety valve (Tellimuse number 43422000)
- 5.1: Membrane (Tellimuse number 4377300M)
- 6: Operating rod (Tellimuse number 43067000)
- 7: Discharge sleeve (Tellimuse number 43326000)
- 8: Throttle nozzle (Tellimuse number 43407000)
- 9: Set of seals (Tellimuse number 43012000)*

* Lisatarvikud