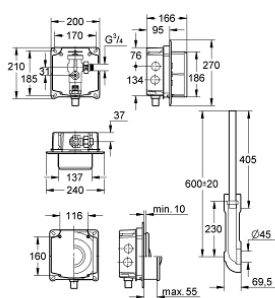


## 37 048 000 **FLUSH VALVE FOR WC**



### TOOTE KIRJELDUS

- concealed installation
- $\frac{3}{4}$ "
- with connection to solenoid valve
- stop valve
- 6 - 9 l adjustable
- flow pressure range from 1.2 - 5.0 bar
- with flow rate adjustment
- 2 m connecting cable
- box for concealed installation with flush elbow
- concealed flush pipe
- without electronic actuation



## 37 048 000 FLUSH VALVE FOR WC



### VARUOSAD, juuli 2008 – nüüd

- 1: Hand wheel (Tellimuse number 43043000)
- 2: Cover (Tellimuse number 43122000)
- 3: Piston (Tellimuse number 43451000)
- 3.1: Sleeve (Tellimuse number 4376900M)
- 4: Supply stop (Tellimuse number 43405000)
- 5: Safety valve (Tellimuse number 43422000)
- 5.1: Membrane (Tellimuse number 4377300M)
- 6: Operating rod (Tellimuse number 43067000)
- 7: Discharge sleeve (Tellimuse number 43326000)
- 8: Throttle nozzle (Tellimuse number 43407000)
- 9: Relief hose (Tellimuse number 42823000)
- 10: Solenoid valve (Tellimuse number 42822000)
- 10.1: Dirt strainer (Tellimuse number 4365500M)
- 10.2: Membrane (Tellimuse number 43809000)
- 11: Set of seals (Tellimuse number 43012000)\*

\* Lisatarvikud