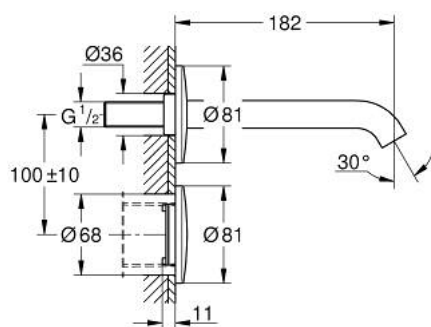


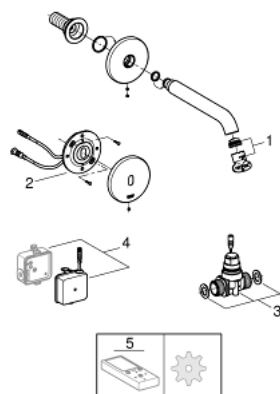
36 447 000 ESSENCE E INFRA-RED ELECTRONIC WALL BASIN TAP WITHOUT MIXING DEVICE



TOOTE KIRJELDUS

- Värvus: chrome
- with infrared sensor for bi-directional communication for monitoring, configuration and service purpose
- for cold or premixed water
- with transformer 100-230 V AC, 50-60 Hz, 6 V DC
- GROHE Water Saving - Less water, perfect flow
- maximum flow rate (at 3 bar): 5 l/min
- 7 pre-set programs:
 - auto flush
 - thermal disinfection
 - cleaning mode
- additional functions and precise settings by remote control 36 407
- set for final installation
- for use with Rapid SL 38 748 002 or roughing-in set 36 264 001
- CE approved
- acoustic group I in accordance with DIN 4109
- min. recommended pressure 1.0 bar

36 447 000 ESSENCE E INFRA-RED ELECTRONIC WALL BASIN TAP WITHOUT MIXING DEVICE



VARUOSAD, september 2016 – nüüd

1: Laminar flow straightener (Tellimuse number 48376000)

2: Electronic (Tellimuse number 42484000)

3: Solenoid valve complete (Tellimuse number 42740000)

4: Switching power supply (Tellimuse number 42470000)

5: Remote control (Tellimuse number 36407001)*

* Lisatarvikud