

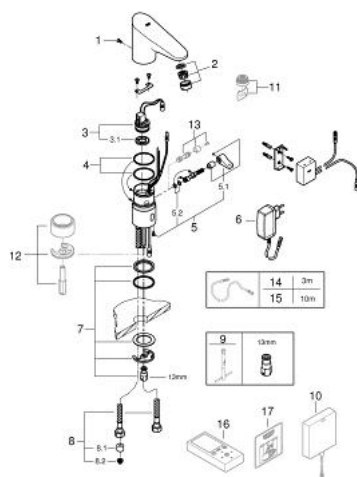
- Värvus: chrome
- with infrared sensor and Bluetooth module for bi-directional communication for monitoring, configuration and service purpose
- with plug transformer 100-240 V AC, 50-60 Hz, 6.75 V DC
- rapid installation system
- mixing device with adjustable hot water limiter
- GROHE Long-Life finish
- GROHE Water Saving mousseur 5.7 l/min
- with integrated solenoid valve
- integrated non-return valves and dirt strainers
- with Bluetooth® 4.0* for wireless data communication
- for Apple** and Android devices
- Bluetooth range (max. 10 m) varies depending on used materials and walls between transmitter and receiver
- monitoring
- password protected products
- app detects all Bluetooth products in range
- auto flush cycles and timing last auto flush
- usage per day / 30 days
- thermal disinfection cycles and timings last disinfection
- configuration
- detection range and shut off delay
- auto flush
- thermal disinfection
- cleaning mode
- 2 on/off timers
- service
- send and save 3 profiles
- reset to factory or user settings
- hard and software version
- CE approved
- acoustic group I in accordance with DIN 4109
- type of protection faucet IP 59K

36 411 000 EUROPLUS E BLUETOOTH INFRA-RED ELECTRONIC BASIN TAP 1/2" WITH MIXING DEVICE

TOOTE KIRJELDUS (2/2)

- Mobile devices and GROHE IR Remote App*** are not included in delivery and have to be ordered separately via an authorised Apple store/store/iTunes or Google Play store.
- * The Bluetooth® word mark and logos are registered trademarks owned by Bluetooth SIG, Inc. and any use of such marks by Grohe AG is under license. Other trademarks and trade names are those of their respective owners.
- ** Apple, the Apple logo, iPod, iPod Touch, iPhone and iTunes are trademarks of Apple Inc., registered in the U.S. and other countries. Apple is not responsible for the function of this device or its compliance with safety and regulatory standards.
- *** Available for free via iTunes app or Google Play store.

36 411 000 EUROPLUS E BLUETOOTH INFRA-RED ELECTRONIC BASIN TAP 1/2" WITH MIXING DEVICE



VARUOSAD, september 2014 – nüüd

- 1: Screws (Tellimuse number 4283100M)
- 2: Mousseur (Tellimuse number 48159000)
- 3: Solenoid valve (Tellimuse number 42229000)
- 3.1: Dirt strainer (Tellimuse number 42798000)
- 4: Sealing washer (Tellimuse number 4283600M)
- 5: Mixer spindle with lever (Tellimuse number 42839000)
- 5.1: Mixing lever (Tellimuse number 42838000)
- 5.2: Sealing washer (Tellimuse number 4284000M)
- 6: Mains adaptor (Tellimuse number 42388000)
- 7: Fixing set (Tellimuse number 42841000)
- 8: Connection hose (Tellimuse number 42403000)
- 8.1: Non-return valve (Tellimuse number 4240400M)
- 8.2: Filter (Tellimuse number 4241300M)
- 9: Mounting wrench (Tellimuse number 19017000)*
- 10: Switch-mode power supply (Tellimuse number 36338000)*
- 11: Mousseur (Tellimuse number 36133000)*
- 12: Socket (Tellimuse number 36210000)*
- 13: Hidden mixing device (Tellimuse number 36209000)*
- 14: Power extension cable (Tellimuse number 36340000)*
- 15: Power extension cable (Tellimuse number 36341000)*
- 16: Remote control (Tellimuse number 36407001)*
- 17: Sticker with pictograph (Tellimuse number 4217700M)*

* Lisatarvikud