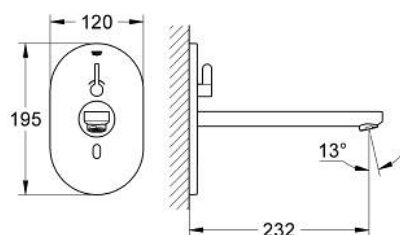
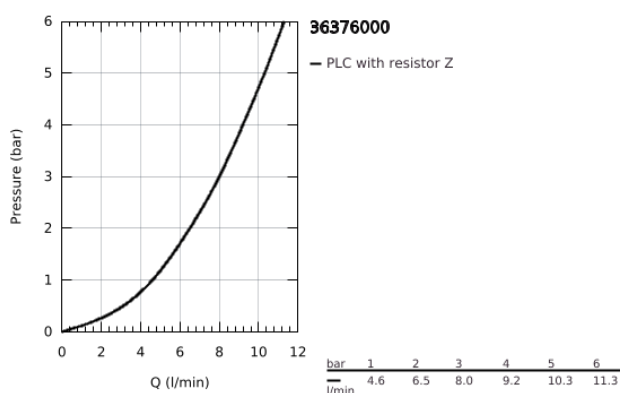


## 36 376 000 EUROSMART COSMOPOLITAN E INFRA-RED ELECTRONIC BASIN MIXER WITH MIXING DEVICE AND ADJUSTABLE TEMPERATURE LIMITER

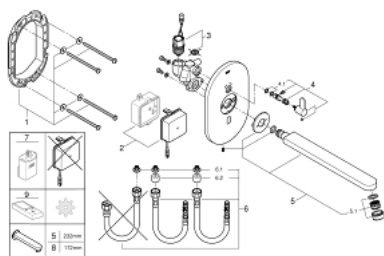


### TOOTE KIRJELDUS

- Värvus: chrome
- with infrared sensor for bi-directional communication for monitoring, configuration and service purpose
- with transformer 100-230 V AC, 50-60 Hz, 6 V DC
- GROHE Long-Life finish
- maximum flow rate (at 3 bar): 8 l/min
- laminar flow straightener
- projection 232 mm
- 7 pre-set programs:
  - auto flush
  - thermal disinfection
  - cleaning mode
- additional functions and precise settings by remote control 36 407
- set for final installation for concealed fitting box
- 36 339 001
- CE approved
- acoustic group I in accordance with DIN 4109



## 36 376 000 EUROSMART COSMOPOLITAN E INFRA-RED ELECTRONIC BASIN MIXER WITH MIXING DEVICE AND ADJUSTABLE TEMPERATURE LIMITER



**VARUOSAD**, oktoober 2018 – nüüd

- 1: Mounting frame (Tellimuse number 42419000)
- 2: Switching power supply (Tellimuse number 42470000)
- 3: Solenoid valve (Tellimuse number 42469000)
- 4: Mixing lever (Tellimuse number 42441000)
- 4.1: Sealing washer (Tellimuse number 4284000M)
- 5: Spout (Tellimuse number 42418000)
- 5.1: Laminar flow straightener (Tellimuse number 13960000)
- 6: Connection hose set (Tellimuse number 42417000)
- 6.1: Filter (Tellimuse number 4241300M)
- 6.2: Non-return valve (Tellimuse number 4240400M)
- 7: Battery housing (Tellimuse number 42393000)\*
- 8: Spout (Tellimuse number 42420000)\*
- 9: Remote control (Tellimuse number 36407001)\*

\* Lisatarvikud