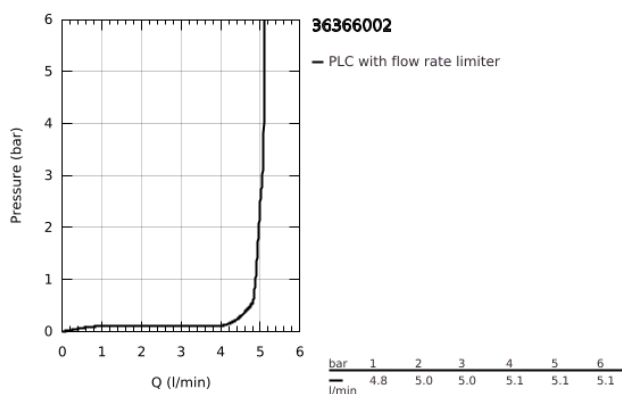
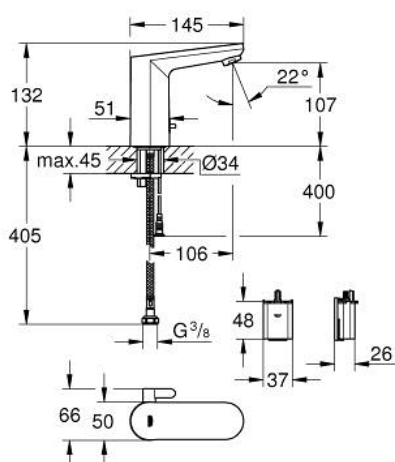


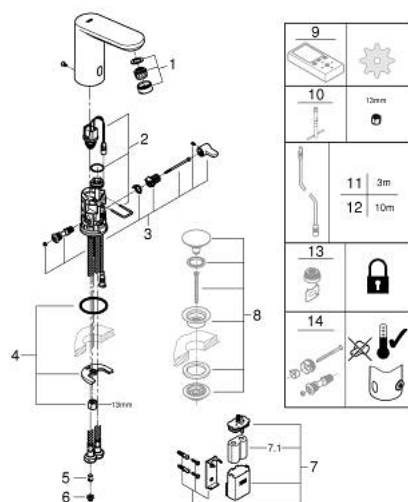
36 366 002 GET E INFRA-RED ELECTRONIC BASIN MIXER



TOOTE KIRJELDUS

- Värvus: chrome
- with infrared sensor for bi-directional communication for monitoring, configuration and service purpose
- single hole installation
- 6 V lithium battery, type CR-P2
- battery lifetime: approx. 7 years (150 actuations a day)
- multistage battery status display
- mixing device with adjustable hot water limiter
- with integrated solenoid valve
- external battery
- GROHE Water Saving mousseur 5.7 l/min
- dirt strainers
- flexible connection hoses
- non-return valve
- rapid installation system
- 7 pre-set programs:
 - auto flush
 - thermal disinfection
 - cleaning mode
- additional functions and precise settings by remote control 36 407
- acoustic group I in accordance with DIN 4109
- type of protection faucet IP 59
- CE approved

36 366 002 GET E INFRA-RED ELECTRONIC BASIN MIXER



VARUOSAD, august 2020 – nüüd

- 1: Mousseur (Tellimuse number 48159000)
- 2: Solenoid valve (Tellimuse number 42479000)
- 3: mixer spindle + lever (Tellimuse number 42623000)
- 4: Shank mounting kit (Tellimuse number 46249000)
- 5: Non-return valve (Tellimuse number 4257200M)
- 6: Filter (Tellimuse number 4241300M)
- 7: Battery housing (Tellimuse number 42393000)
- 7.1: Battery (Tellimuse number 42886000)
- 8: Waste set with push-open plug (Tellimuse number 65807000)*
- 9: Remote control (Tellimuse number 36407001)*
- 10: Mounting wrench (Tellimuse number 19017000)*
- 11: Power extension cable (Tellimuse number 36340000)*
- 12: Power extension cable (Tellimuse number 36341000)*
- 13: Mousseur (Tellimuse number 36133000)*
- 14: cap (Tellimuse number 42624000)*

* Lisatarvikud