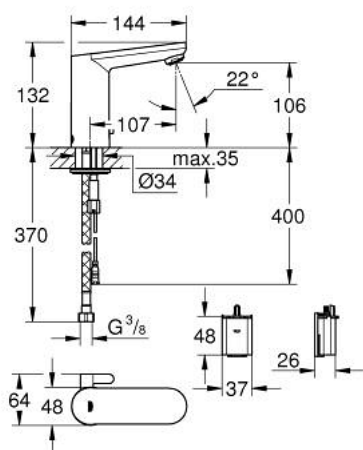


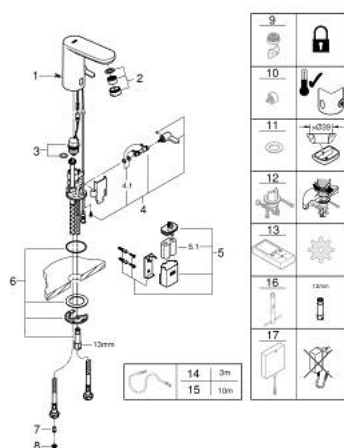
## 36 366 001 GET E INFRA-RED ELECTRONIC BASIN MIXER



### TOOTE KIRJELDUS

- Värvus: chrome
- with infrared sensor for bi-directional communication for monitoring, configuration and service purpose
- single hole installation
- 6 V lithium battery, type CR-P2
- battery lifetime: approx. 7 years (150 actuations a day)
- multistage battery status display
- mixing device with adjustable hot water limiter
- with integrated solenoid valve
- external battery
- GROHE Water Saving mousseur 5.7 l/min
- dirt strainers
- flexible connection hoses
- non-return valve
- rapid installation system
- 7 pre-set programs:
  - auto flush
  - thermal disinfection
  - cleaning mode
- additional functions and precise settings by remote control 36 407
- acoustic group I in accordance with DIN 4109
- type of protection faucet IP 59K
- CE approved

## 36 366 001 GET E INFRA-RED ELECTRONIC BASIN MIXER



### VARUOSAD, juuni 2018 – nüüd

- 1: Screws (Tellimuse number 4283100M)
- 2: Mousseur (Tellimuse number 48159000)
- 3: Solenoid valve (Tellimuse number 42469000)
- 4: Mixing lever (Tellimuse number 42401000)
- 4.1: Sealing washer (Tellimuse number 4284000M)
- 5: Battery housing (Tellimuse number 42393000)
- 5.1: Battery (Tellimuse number 42886000)
- 6: Mounting set (Tellimuse number 42400000)
- 7: Non-return valve (Tellimuse number 4257200M)
- 8: Filter (Tellimuse number 4241300M)
- 9: Mousseur (Tellimuse number 36133000)\*
- 10: Hidden mixing device (Tellimuse number 42408000)\*
- 11: Escutcheon (Tellimuse number 36370000)\*
- 12: Rotation lock (Tellimuse number 36276000)\*
- 13: Remote control (Tellimuse number 36407001)\*
- 14: Power extension cable (Tellimuse number 36340000)\*
- 15: Power extension cable (Tellimuse number 36341000)\*
- 16: Mounting wrench (Tellimuse number 19017000)\*
- 17: Switch-mode power supply (Tellimuse number 36338000)\*

\* Lisatarvikud