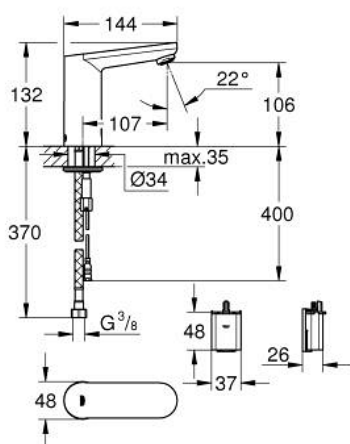
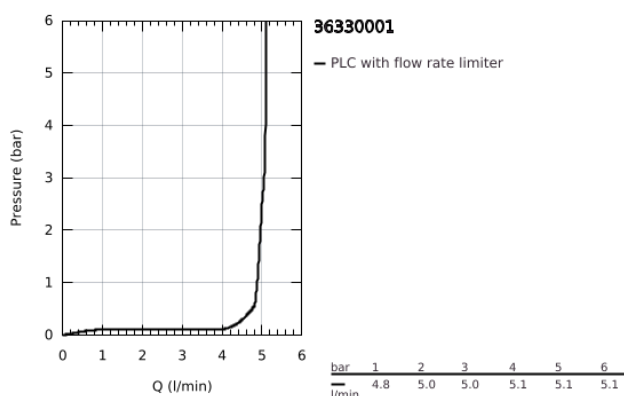


36 330 001 EUROSMART COSMOPOLITAN E INFRA-RED ELECTRONIC BASIN MIXER 1/2" WITH HIDDEN MIXING DEVICE AND ADJUSTABLE TEMPERATURE LIMITER

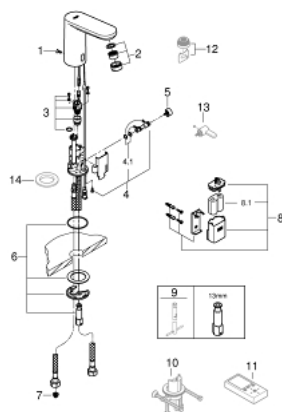


TOOTE KIRJELDUS

- Värvus: chrome
- with infrared sensor for bi-directional communication for monitoring, configuration and service purpose
- 6 V lithium battery, type CR-P2
- battery lifetime: approx. 7 years (150 actuations a day)
- GROHE Long-Life finish
- GROHE Water Saving mousseur 5.7 l/min
- flexible connection hoses
- non-return valve
- dirt strainers
- with integrated solenoid valve
- external battery
- rapid installation system
- multistage battery status display
- 7 pre-set programs:
 - auto flush
 - thermal disinfection
 - cleaning mode
- additional functions and precise settings by remote control 36 407
- CE approved
- acoustic group I in accordance with DIN 4109
- type of protection faucet IP 59K



36 330 001 EUROSMART COSMOPOLITAN E INFRA-RED ELECTRONIC BASIN MIXER 1/2" WITH HIDDEN MIXING DEVICE AND ADJUSTABLE TEMPERATURE LIMITER



VARUOSAD, märts 2021 – nüüd

- 1: Screws (Tellimuse number 4283100M)
- 2: Mousseur (Tellimuse number 48159000)
- 3: Solenoid valve (Tellimuse number 42479000)
- 4: Mixing lever (Tellimuse number 42401000)
- 4.1: Sealing washer (Tellimuse number 4284000M)
- 5: Hidden mixing device (Tellimuse number 42408000)
- 6: Mounting set (Tellimuse number 42400000)
- 7: Filter (Tellimuse number 4241300M)
- 8: Non-return valve (Tellimuse number 4257200M)
- 9: Battery housing (Tellimuse number 42393000)
- 9.1: Battery (Tellimuse number 42886000)
- 10: Mounting wrench (Tellimuse number 19017000)*
- 11: Rotation lock (Tellimuse number 36276000)*
- 12: Remote control (Tellimuse number 36407001)*
- 13: Mousseur (Tellimuse number 36133000)*
- 14: Escutcheon (Tellimuse number 36370000)*

* Lisatarvikud