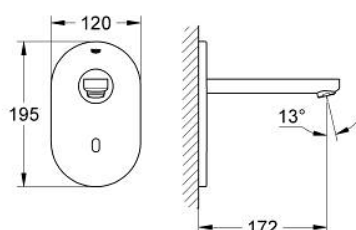
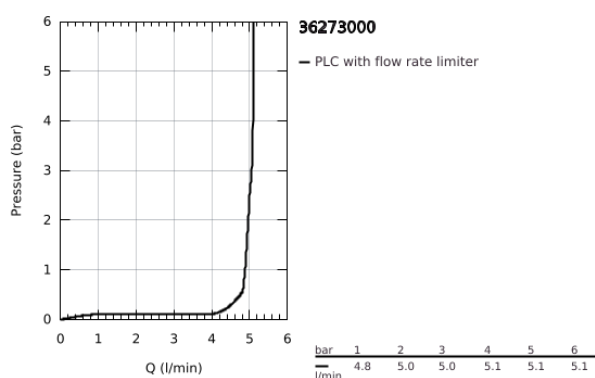


## 36 273 000 EUROECO COSMOPOLITAN E INFRA-RED ELECTRONIC WALL BASIN TAP WITHOUT MIXING DEVICE

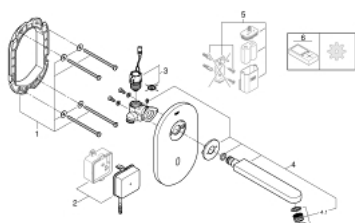


### TOOTE KIRJELDUS

- Värvus: chrome
- with infrared sensor for bi-directional communication for monitoring, configuration and service purpose
- for cold or premixed water
- with transformer 100-230 V AC, 50-60 Hz, 6 V DC
- GROHE Long-Life finish
- GROHE Water Saving - Less water, perfect flow
- maximum flow rate (at 3 bar): 5 l/min
- chrome spout
- projection 172 mm
- 7 pre-set programs:
- auto flush
- thermal disinfection
- cleaning mode
- additional functions and precise settings by remote control 36 407
- set for final installation for concealed fitting box
- 36 336 001/36 337 001
- CE approved
- acoustic group I in accordance with DIN 4109



## 36 273 000 EUROECO COSMOPOLITAN E INFRA-RED ELECTRONIC WALL BASIN TAP WITHOUT MIXING DEVICE



### VARUOSAD, mai 2018 – nüüd

- 1: Mounting frame (Tellimuse number 42419000)
- 2: Switching power supply (Tellimuse number 42470000)
- 3: Solenoid valve (Tellimuse number 42469000)
- 4: Spout (Tellimuse number 42445000)
- 4.1: Mousseur (Tellimuse number 48159000)
- 5: Battery housing (Tellimuse number 42393000)\*
- 6: Remote control (Tellimuse number 36407001)\*

\* Lisatarvikud