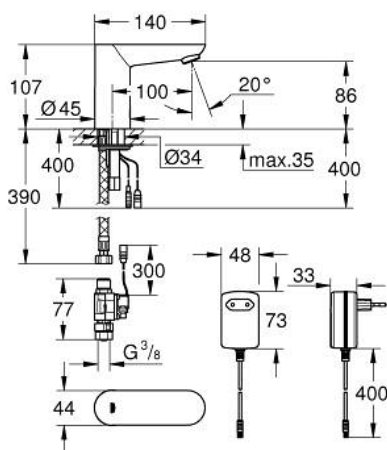
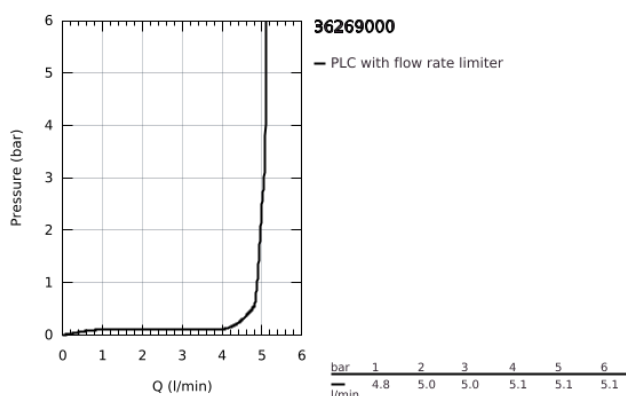


## 36 269 000 EUROECO COSMOPOLITAN E INFRA-RED ELECTRONIC BASIN TAP 1/2" WITHOUT TEMPERATURE CONTROL

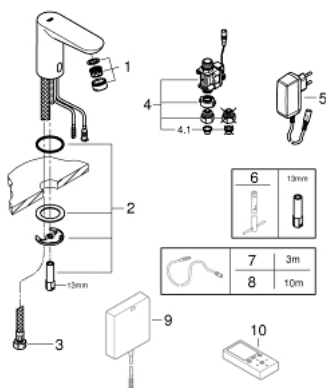


### TOOTE KIRJELDUS

- Värvus: chrome
- with infrared sensor for bi-directional communication for monitoring, configuration and service purpose
- for cold or premixed water
- with plug transformer 100-230 V AC, 50-60 Hz, 6 V DC
- GROHE Long-Life finish
- GROHE Water Saving - Less water, perfect flow
- maximum flow rate (at 3 bar): 5 l/min
- flexible connection hoses
- dirt strainers
- external solenoid valve
- rapid installation system
- 7 pre-set programs:
- auto flush
- thermal disinfection
- cleaning mode
- additional functions and precise settings by remote control 36 407
- CE approved
- acoustic group I in accordance with DIN 4109
- type of protection faucet IP 59K



## 36 269 000 EUROECO COSMOPOLITAN E INFRA-RED ELECTRONIC BASIN TAP 1/2" WITHOUT TEMPERATURE CONTROL



**VARUOSAD**, september 2015 – nüüd

- 1: Mousseur (Tellimuse number 48159000)
- 2: Shank mounting kit (Tellimuse number 42389000)
- 3: Connection hose (Tellimuse number 46255000)
- 4: Solenoid valve (Tellimuse number 42390000)
- 4.1: Dirt strainer (Tellimuse number 42395000)
- 5: Mains adaptor (Tellimuse number 42388000)
- 6: Mounting wrench (Tellimuse number 19017000)\*
- 7: Power extension cable (Tellimuse number 36340000)\*
- 8: Power extension cable (Tellimuse number 36341000)\*
- 9: Switch-mode power supply (Tellimuse number 36338000)\*
- 10: Remote control (Tellimuse number 36407001)\*

\* Lisatarvikud