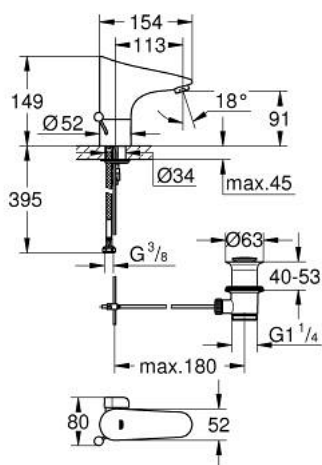


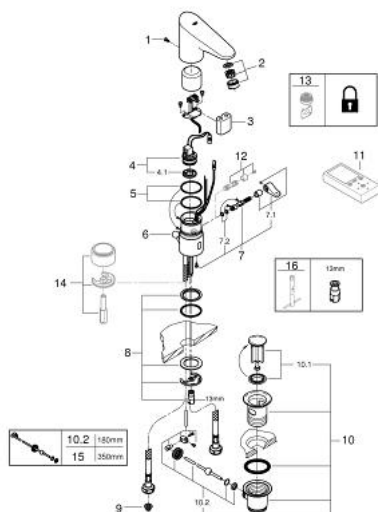
36 236 001 EUROPLUS E INFRA-RED ELECTRONIC BASIN MIXER 1/2" WITH MIXING DEVICE, ADJUSTABLE TEMPERATURE LIMITER AND WASTE SET



TOOTE KIRJELDUS

- Värvus: chrome
- with infrared sensor for bi-directional communication for monitoring, configuration and service purpose
- 6 V lithium battery, type CR-P2
- battery lifetime: approx. 7 years (150 actuations a day)
- GROHE Long-Life finish
- GROHE Water Saving mousseur 5.7 l/min
- pop-up waste set 1 1/4"
- flexible connection hoses
- non-return valve
- dirt strainers
- solenoid valve
- rapid installation system
- multistage battery status display
- 7 pre-set programs:
 - auto flush
 - thermal disinfection
 - cleaning mode
- additional functions and precise settings by remote control 36 407
- CE approved
- acoustic group I in accordance with DIN 4109
- type of protection faucet IP 59K

36 236 001 EUROPLUS E INFRA-RED ELECTRONIC BASIN MIXER 1/2" WITH MIXING DEVICE, ADJUSTABLE TEMPERATURE LIMITER AND WASTE SET



VARUOSAD, juuni 2016 – nüüd

- 1: Screws (Tellimuse number 4283100M)
- 2: Mousseur (Tellimuse number 48159000)
- 3: Battery (Tellimuse number 42886000)
- 4: Solenoid valve (Tellimuse number 42229000)
- 4.1: Dirt strainer (Tellimuse number 42798000)
- 5: Sealing washer (Tellimuse number 4283600M)
- 6: Pop-up rod (Tellimuse number 42707000)
- 7: Mixer spindle with lever (Tellimuse number 42839000)
- 7.1: Mixing lever (Tellimuse number 42838000)
- 7.2: Sealing washer (Tellimuse number 4284000M)
- 8: Fixing set (Tellimuse number 42841000)
- 9: Filter (Tellimuse number 4241300M)
- 10: Waste set 1 1/4" (Tellimuse number 28910000)
- 10.1: Plug (Tellimuse number 07182000)
- 10.2: Eccentric rod (Tellimuse number 07052000)
- 11: Remote control (Tellimuse number 36407001)*
- 13: Mousseur (Tellimuse number 36133000)*
- 14: Socket (Tellimuse number 36210000)*
- 15: Eccentric rod (Tellimuse number 07341000)*
- 16: Mounting wrench (Tellimuse number 19017000)*

* Lisatarvikud