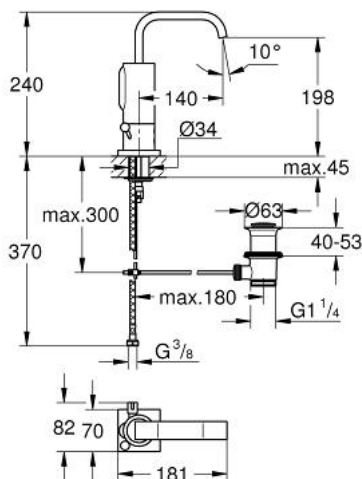


36 234 000 ALLURE E INFRA-RED ELECTRONIC BASIN MIXER 1/2" WITH MIXING DEVICE, ADJUSTABLE TEMPERATURE LIMITER AND WASTE SET

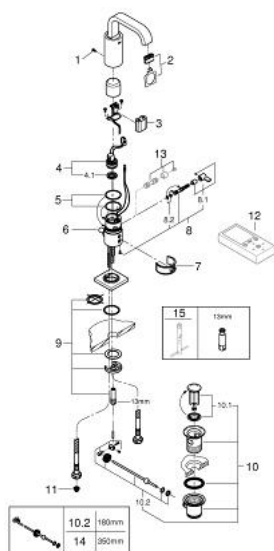


TOOTE KIRJELDUS

- Värvus: chrome
- single hole installation
- 6 V lithium battery, type CR-P2
- GROHE Long-Life finish
- GROHE Water Saving 6.0 l/min. flow limiter
- integrated mousseur
- solenoid valve integrated in housing
- pop-up waste set 1 1/4"
- flexible connection hoses
- dirt strainers
- rapid installation system
- multistage battery status display
- automatic safety stop after 60 sec. (factory set)
- additional functions and precise settings by remote control 36 407
- automatic flushing after 1 or 3 days without use
- activation of permanent run for thermal disinfection for 3.5 or 11 min
- CE approved
- acoustic group I in accordance with DIN 4109
- type of protection faucet IP 59K



36 234 000 ALLURE E INFRA-RED ELECTRONIC BASIN MIXER 1/2" WITH MIXING DEVICE, ADJUSTABLE TEMPERATURE LIMITER AND WASTE SET



VARUOSAD, juuni 2016 – nüüd

- 1: Screws (Tellimuse number 4283100M)
- 2: Mousseur (Tellimuse number 13220000)
- 3: Battery (Tellimuse number 42886000)
- 4: Solenoid valve (Tellimuse number 42229000)
- 4.1: Dirt strainer (Tellimuse number 42798000)
- 5: Sealing washer (Tellimuse number 4283600M)
- 6: Pop-up rod (Tellimuse number 42707000)
- 7: Cleaning clip (Tellimuse number 42837000)
- 8: Mixer spindle with lever (Tellimuse number 42363000)
- 8.1: Mixing lever (Tellimuse number 42364000)
- 8.2: Sealing washer (Tellimuse number 4284000M)
- 9: Fixing set (Tellimuse number 42841000)
- 10: Waste set 1 1/4" (Tellimuse number 28910000)
- 10.1: Plug (Tellimuse number 07182000)
- 10.2: Eccentric rod (Tellimuse number 07052000)
- 11: Filter (Tellimuse number 4241300M)
- 12: Remote control for all GROHE infra-red products (Tellimuse number 36407000)*
- 13: Hidden mixing device (Tellimuse number 36209000)*
- 14: Eccentric rod (Tellimuse number 07341000)*
- 15: Mounting wrench (Tellimuse number 19017000)*

* Lisatarvikud