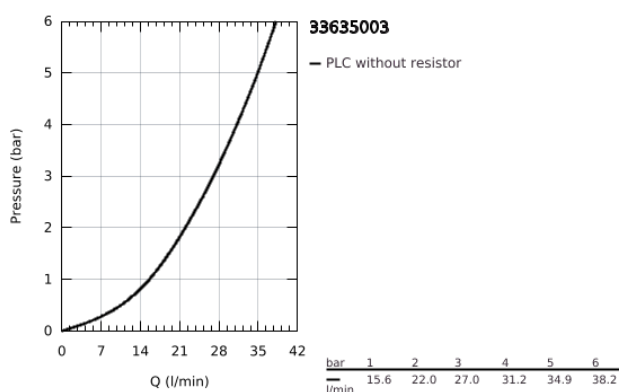
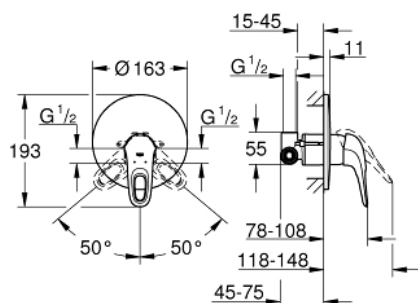


33 635 003 EUROSTYLE SINGLE-LEVER SHOWER MIXER 1/2"



TOOTE KIRJELDUS

- Värvus: chrome
- wall installation
- GROHE SilkMove 46 mm ceramic cartridge
- GROHE Long-Life finish
- GROHE FastFixation covered fixation
- consisting of:
- set for final installation
- (19 507 003)
- with concealed body
- adjustable flow rate limiter
- loop metal lever
- escutcheon- and shaft-sealing
- metal wall escutcheon
- optional temperature limiter ref. no. 46 308



33 635 003 EUROSTYLE SINGLE-LEVER SHOWER MIXER 1/2"

VARUOSAD, jaanuar 2015 – nüüd

1: Lever (Tellimuse number 46940000)

2: Escutcheon (Tellimuse number 46904000)

3: Cartridge (Tellimuse number 46048000)

4: Temperature limiter (Tellimuse number 46308000)*

5: Extension set (Tellimuse number 46191000)*

6: Extension set (Tellimuse number 46343000)*

* Lisatarvikud

