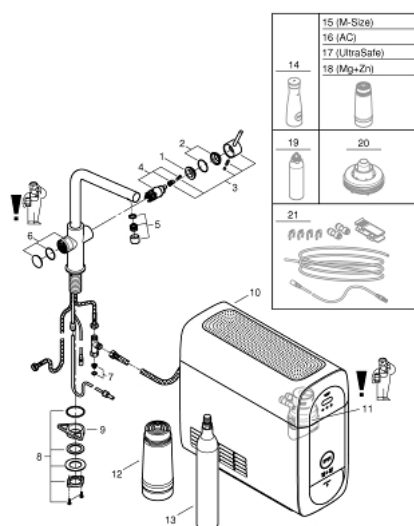


## 31 454 001 GROHE BLUE HOME L-SPOUT STARTER KIT

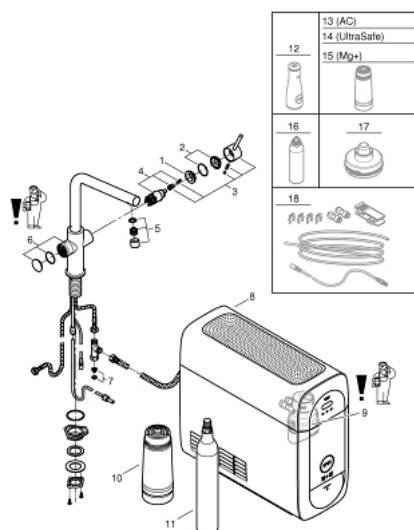


VARUOSAD, oktoober 2021 – nüüd

- 1: Fitting ring (Tellimuse number 07419000)
- 2: Cap (Tellimuse number 46581000)
- 3: Lever (Tellimuse number 46957000)
- 4: Cartridge (Tellimuse number 46580000)
- 5: Mousseur GROHE Blue L spout (Tellimuse number 48194000)
- 6: Operating unit (Tellimuse number 46958000)
- 7: Dirt strainer (Tellimuse number 47576000)
- 8: Shank fastening assembly (Tellimuse number 48384000)
- 9: Support plate (Tellimuse number 05334000)
- 10: Cooler (Tellimuse number 40711001)
- 11: Filter head (Tellimuse number 48344000)
- 12: Filter S-Size (Tellimuse number 40404001)
- 13: Starter kit 425 g CO<sub>2</sub> bottles (4 pieces) (Tellimuse number 40422000)
- 14: Glass carafe (Tellimuse number 40405000)\*
- 15: Filter M-Size (Tellimuse number 40430001)\*
- 16: Activated carbon filter (Tellimuse number 40547001)\*
- 17: UltraSafe filter (Tellimuse number 40575001)\*
- 18: Magnesium+ filter (Tellimuse number 40691001)\*
- 19: Cleaning cartridge (Tellimuse number 40434001)\*
- 20: Cleaning cartridge adapter (Tellimuse number 40694000)\*
- 21: Extension set (Tellimuse number 40843000)\*

\* Lisatarvikud

## 31 454 001 GROHE BLUE HOME L-SPOUT STARTER KIT



VARUOSAD, aprill 2017 – oktoober 2021

- 1: Fitting ring (Tellimuse number 07419000)
- 2: Cap (Tellimuse number 46581000)
- 3: Lever (Tellimuse number 46957000)
- 4: Cartridge (Tellimuse number 46580000)
- 5: Mousseur GROHE Blue L spout (Tellimuse number 48194000)
- 6: Operating unit (Tellimuse number 46958000)
- 7: Dirt strainer (Tellimuse number 47576000)
- 8: Cooler (Tellimuse number 40711001)
- 9: Filter head (Tellimuse number 48344000)
- 10: Filter S-Size (Tellimuse number 40404001)
- 11: Starter kit 425 g CO<sub>2</sub> bottles (4 pieces) (Tellimuse number 40422000)
- 12: Glass carafe (Tellimuse number 40405000)\*
- 13: Activated carbon filter (Tellimuse number 40547001)\*
- 14: UltraSafe filter (Tellimuse number 40575001)\*
- 15: Magnesium+ filter (Tellimuse number 40691001)\*
- 16: Cleaning cartridge (Tellimuse number 40434001)\*
- 17: Cleaning cartridge adapter (Tellimuse number 40694000)\*
- 18: Extension set (Tellimuse number 40843000)\*

\* Lisatarvikud