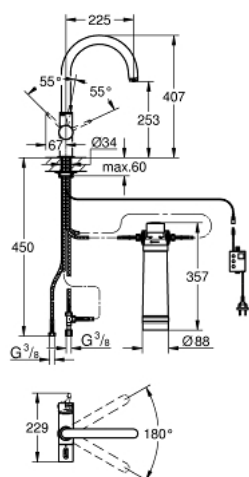


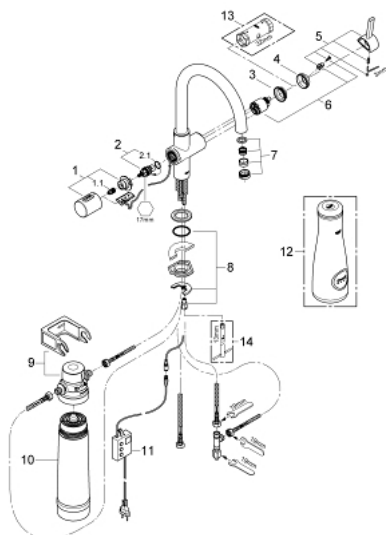
31 328 001 GROHE BLUE ULTRASAFE PURE STARTER KIT



TOOTE KIRJELDUS

- Värvus: chrome
- consisting of:
 - GROHE Blue single-lever sink mixer with filter function
 - single hole installation
 - C-spout
 - separate handle for filtered water
 - headpart 1/2"
 - GROHE Long-Life finish
 - GROHE SilkMove 35 mm ceramic cartridge
 - adjustable flow rate limiter
 - swivel tubular spout
 - swivel area 180°
 - separate inner water ways for filtered and non-filtered water
 - flexible connection hoses
 - type of protection IP 21
 - main switching power supply 100 - 240 V AC 50/60 Hz with safety extra-low voltage (SELV) 6 V DC to filter change display unit
 - GROHE Blue UltraSafe 3000 I filter
 - UltraSafe filter head with flexible adjustment

31 328 001 GROHE BLUE ULTRASAFE PURE STARTER KIT



VARUOSAD, august 2013 – nüüd

- 1: Handle (Tellimuse number 46652000)
- 1.1: Snap insert (Tellimuse number 0538600M)
- 2: Headpart (Tellimuse number 64368000)
- 2.1: O-ring Ø 18.2 x Ø 1.7 (Tellimuse number 0392400M)
- 3: Screw coupling (Tellimuse number 46460000)
- 4: Cap (Tellimuse number 46116000)
- 5: Lever (Tellimuse number 46653000)
- 6: Cartridge (Tellimuse number 46374000)
- 7: Mousseur (Tellimuse number 64374000)
- 8: Shank mounting kit (Tellimuse number 46249000)
- 9: Filter head (Tellimuse number 40576000)
- 10: Filter (Tellimuse number 40575000)
- 11: Control unit (Tellimuse number 48151000)
- 12: Glass carafe (Tellimuse number 40405000)*
- 13: Socket spanner (Tellimuse number 19332000)*
- 14: Mounting wrench (Tellimuse number 19017000)*

* Lisatarvikud