

30 276 002 FLAIR TOUCH ELECTRONIC SINGLE-LEVER SINK MIXER 1/2"

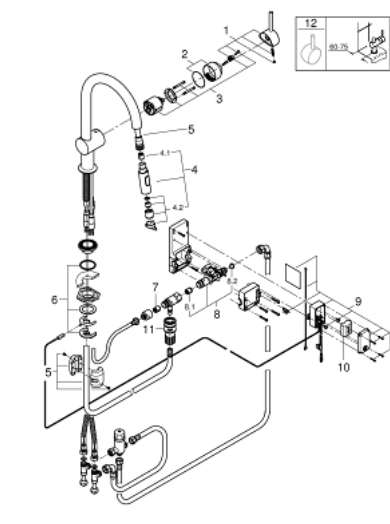


TOOTE KIRJELDUS

- Värvus: chrome
- C-spout
- single hole installation
- Touch: activation of water via skin contact
- battery supply 6 V lithium-battery, type CR-P2
- CE approved
- solenoid valve
- fixed value mixing valve
- automatic safety stop after 60 sec. (factory set)
- type of protection IP 44
- GROHE SilkMove 46 mm ceramic cartridge
- GROHE Long-Life finish
- Lead and Nickel Free Inner Water Ways
- adjustable flow rate limiter
- swivel tubular spout
- swivel area 360°
- pull-out dual spray
- diverter: laminar spray/SpeedClean shower jet
- automatic return to laminar spray
- flexible connection hoses
- rapid installation system
- protected against backflow



30 276 002 FLAIR TOUCH ELECTRONIC SINGLE-LEVER SINK MIXER 1/2"



VARUOSAD, juuli 2017 – nüüd

- 1: Lever (Tellimuse number 46015000)
 - 2: Cap (Tellimuse number 46025000)
 - 3: Cartridge (Tellimuse number 46048000)
 - 4: Pull out spray (Tellimuse number 48416000)
 - 4.1: Non-return valve (Tellimuse number 08565000)
 - 4.2: Flow straightener (Tellimuse number 48347000)
 - 5: Hose for sink mixer with pull-out dual spray or mousseur (Tellimuse number 48293000)
 - 6: Shank mounting kit (Tellimuse number 46345000)
 - 7: Non-return valve (Tellimuse number 08565000)
 - 8: Solenoid valve (Tellimuse number 48213000)
 - 8.1: Non-return valve (Tellimuse number 08565000)
 - 8.2: Dirt strainer (Tellimuse number 42395000)
 - 9: Control unit (Tellimuse number 48214000)
 - 10: Battery (Tellimuse number 42886000)
 - 11: Quick coupling (Tellimuse number 46338000)
 - 12: Lever (Tellimuse number 40684000)*
- * Lisatarvikud