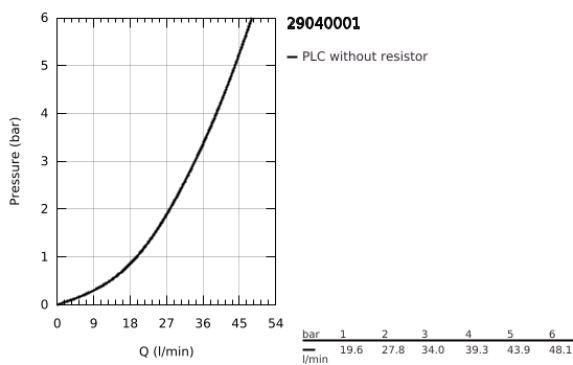
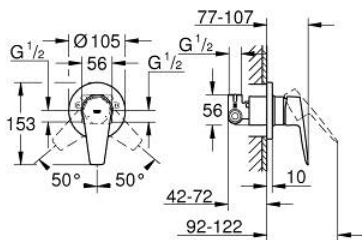


29 040 001 **BAUEDGE SINGLE-LEVER SHOWER MIXER 1/2"**

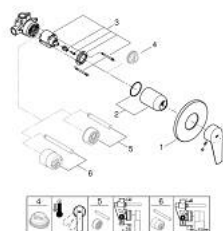


TOOTE KIRJELDUS

- Värvus: chrome
- concealed installation
- consisting of:
- set for final installation
- rough-in set for wall mounted shower mixer
- GROHE SmoothControl 46 mm ceramic cartridge
- GROHE LongLife finish
- adjustable flow rate limiter
- escutcheon- and shaft-sealing
- optional temperature limiter ref. no. 46 375 000



29 040 001 BAUEDGE SINGLE-LEVER SHOWER MIXER 1/2"



VARUOSAD, september 2018 – nüüd

- 1: Escutcheon (Tellimuse number 46773000)
- 2: Cap (Tellimuse number 09038000)
- 3: Cartridge (Tellimuse number 46048000)
- 4: Temperature limiter (Tellimuse number 46308000)*
- 5: Extension set (Tellimuse number 46191000)*
- 6: Extension set (Tellimuse number 46343000)*

* Lisatarvikud