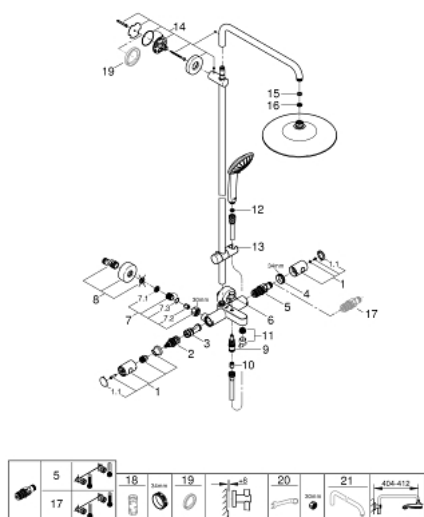


27 475 001 EUPHORIA SYSTEM 260 SHOWER SYSTEM WITH BATH THERMOSTAT FOR WALL MOUNTING



VARUOSAD, oktoober 2016 – märts 2021

- 1: Metal handle 1/2" (Tellimuse number 47984000)
- 1.1: Cover cap (Tellimuse number 6458500M)
- 2: Aquadimmer (Tellimuse number 47364000)
- 3: Water flow (Tellimuse number 47887000)
- 4: Fitting ring (Tellimuse number 47743000)
- 5: Thermostatic compact cartridge 1/2" (Tellimuse number 47439000)
- 6: Diverter knob (Tellimuse number 65648000)
- 7: Non-return valve (Tellimuse number 47189000)
- 7.1: Dirt strainer (Tellimuse number 0726400M)
- 7.2: Non-return valve (Tellimuse number 08565000)
- 7.3: O-ring $\varnothing 17 \times \varnothing 2$ (Tellimuse number 0305500M)
- 8: S-union (Tellimuse number 12662000)
- 9: Diverter (Tellimuse number 65655000)
- 10: Non-return valve (Tellimuse number 08565000)
- 11: Mousseur (Tellimuse number 13926000)
- 12: Dirt strainer (Tellimuse number 0700200M)
- 13: Glide element (Tellimuse number 12140000)
- 14: Shower bar holder (Tellimuse number 48279000)
- 15: Fibre seal $\varnothing 18,5 \times \varnothing 12 \times 2$ (Tellimuse number 0138900M)
- 16: Dirt strainer (Tellimuse number 48007000)
- 17: GROHE TurboStat cartridge 1/2" (Tellimuse number 47175000)*
- 18: Socket spanner (Tellimuse number 19332000)*
- 19: Compensation disc (Tellimuse number 27180000)*
- 20: Special spanner (Tellimuse number 19377000)*
- 21: Shower arm for shower systems (Tellimuse number 14047000)*

* Lisatarvikud