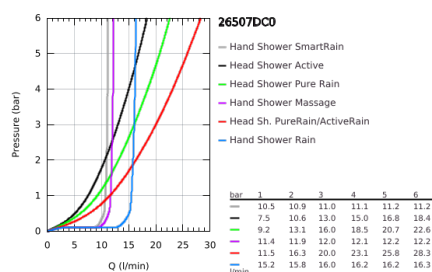
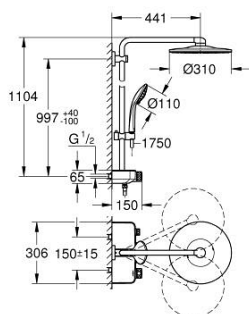


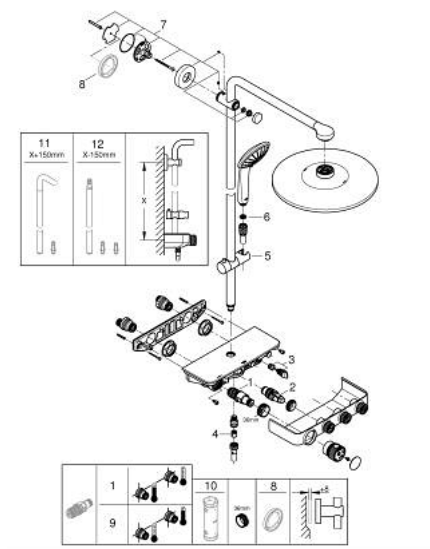
26 507 DC0 EUPHORIA SMARTCONTROL SYSTEM 310 DUO SHOWER SYSTEM WITH THERMOSTAT FOR WALL MOUNTING



TOOTE KIRJELDUS

- Värvus: supersteel
- consisting of:
 - horizontal 450 mm shower arm
 - upper bracket adjustable for minimal adaption to existing drilling holes
 - exposed SmartControl thermostat
 - allows change between:
 - head shower Rainshower SmartActive 310
 - 2 spray patterns:
 - GROHE PureRain, ActiveRain
 - maximum flow rate (at 3 bar): 20 l/min
 - hand shower Euphoria 110 Massage, spray plate white
 - 3 spray patterns:
 - Rain, SmartRain, Massage
 - maximum flow rate (at 3 bar): 16 l/min
 - adjustable in height with gliding element
 - Silverflex shower hose 1750 mm 1/2" x 1/2" (28 388)
 - GROHE DreamSpray perfect spray pattern
 - GROHE Long-Life finish
 - GROHE CoolTouch no risk of scalding
 - GROHE TurboStat compact cartridge with wax thermoelement
 - GROHE ProGrip with knurl structure
 - GROHE SafeStop safety button at 38°C
 - GROHE SafeStop Plus optional temperature limiter at 43°C included
 - GROHE SmartControl push for ON-OFF, turn for volume adjustment from GROHE Water Saving to Full Flow
 - integrated GROHE EasyReach shower tray
 - SpeedClean anti-lime system
 - Inner WaterGuide for a longer life
 - TwistStop to prevent hose from twisting
 - suitable for instantaneous heaters from 18 kW/h
 - minimum flow rate 5 l/min.

26 507 DC0 EUPHORIA SMARTCONTROL SYSTEM 310 DUO SHOWER SYSTEM WITH THERMOSTAT FOR WALL MOUNTING



VARUOSAD, juuli 2018 – november 2021

- 1: Thermostatic compact cartridge 1/2" (Tellimuse number 47439000)
- 2: Cartridge (Tellimuse number 48297000)
- 3: Non-return valve (Tellimuse number 49069000)
- 4: Non-return valve (Tellimuse number 08565000)
- 5: Glide element (Tellimuse number 48177DC0)
- 6: Dirt strainer (Tellimuse number 0700200M)
- 7: Shower bar holder (Tellimuse number 48279DC0)
- 9: GROHE TurboStat cartridge 1/2" (Tellimuse number 47175000)*
- 10: Socket spanner (Tellimuse number 49059000)*

* Lisatarvikud