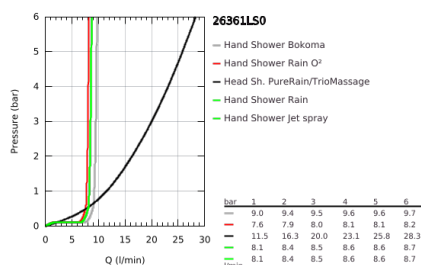
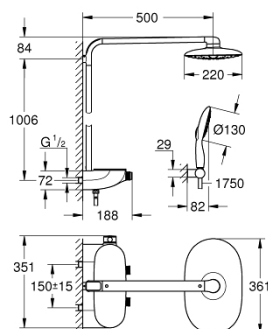


26 361 LS0 RAINSHOWER SYSTEM SMARTCONTROL MONO 360 SHOWER SYSTEM WITH THERMOSTAT FOR WALL MOUNTING

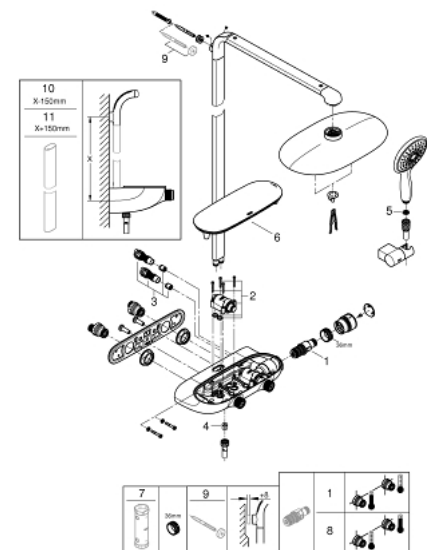


TOOTE KIRJELDUS

- Värvus: moon white/chrome
- consisting of:
 - horizontal 500 mm shower arm
 - exposed SmartControl thermostat
 - allows change between:
 - head shower Rainshower Mono 360, spray plate white
 - GROHE PureRain/GROHE Rain O2 spray*
 - Power&Soul 130 hand shower, spray plate white (27 673)
 - hand shower wall holder (27 055)
 - Silverflex shower hose 1750 mm 1/2" x 1/2" (28 388)
- minimum flow rate 10 l/min.
- GROHE DreamSpray perfect spray pattern
- GROHE Long-Life finish
- GROHE CoolTouch no risk of scalding
- GROHE TurboStat compact cartridge with wax thermoelement
- GROHE Water Saving - Less water, perfect flow
- GROHE SafeStop at 38°C
- GROHE SafeStop Plus optional temperature limiter at 43°C included
- GROHE SmartControl push for ON-OFF, turn for volume adjustment from GROHE Water Saving to Full Flow
- GROHE EasyReach shower tray
- SpeedClean anti-lime system
- suitable for instantaneous heaters from 18 kW/h
- TwistStop to prevent hose from twisting
- * to be decided at first installation; factory default setting: GROHE PureRain
- In case of a 160 cc thermostat you need to purchase one of the following wall fixation sets for installation: 125356, 125357
- GROHE Long-Life finish



26 361 LS0 RAINSHOWER SYSTEM SMARTCONTROL MONO 360 SHOWER SYSTEM WITH THERMOSTAT FOR WALL MOUNTING



VARUOSAD, oktoober 2018 – nüüd

- 1: Thermostatic compact cartridge 1/2" (Tellimuse number 47439000)
- 2: Cartridge (Tellimuse number 48297000)
- 3: Non-return valve (Tellimuse number 4901000M)
- 4: Non-return valve (Tellimuse number 08565000)
- 5: Dirt strainer (Tellimuse number 0700200M)
- 6: Cover (Tellimuse number 48482000)
- 7: Socket spanner (Tellimuse number 49059000)*
- 8: GROHE TurboStat cartridge 1/2" (Tellimuse number 47175000)*
- 9: Compensation disc (Tellimuse number 26385000)*
- 10: Shower system pipe for retrofitting (Tellimuse number 48349000)*
- 11: Shower system pipe for retrofitting (Tellimuse number 48350000)*

* Lisatarvikud