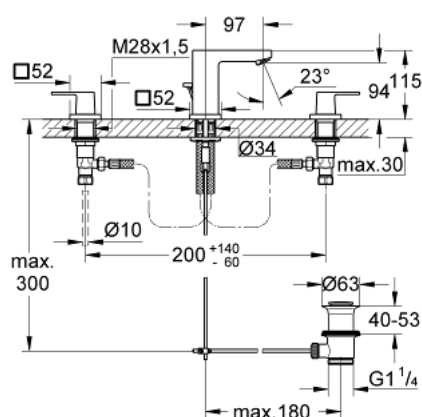


- Värvus: supersteel
- ceramic headparts 1/2", 90°
- GROHE Long-Life finish
- GROHE FastFixation Plus installation system
- spout with mousseur
- pop-up waste set 1 1/4"
- pressure-proof, flexible connection hoses between spout and side valves



## 20 351 DC0 EUROCUBE THREE-HOLE BASIN MIXER 1/2" S-SIZE



### VARUOSAD, juuli 2018 – nüüd

- 1: Handle pair (Tellimuse number 48321DC0)
  - 2: Ceramic headpart, 1/2" (Tellimuse number 45882000)
  - 2.1: O-ring Ø 18.2 x Ø 1.7 (Tellimuse number 0392400M)
  - 3: Ceramic headpart, 1/2" (Tellimuse number 45883000)
  - 3.1: O-ring Ø 18.2 x Ø 1.7 (Tellimuse number 0392400M)
  - 4: Coupling nut 1/2" (Tellimuse number 1290100M)
  - 4.1: Fibre seal Ø 18,5 x Ø 12 x 2 (Tellimuse number 0138900M)
  - 5: Mousseur (Tellimuse number 13929DC0)
  - 6: Pop-up rod (Tellimuse number 46787DC0)
  - 7: Escutcheon (Tellimuse number 48421DC0)
  - 8: Shank mounting kit (Tellimuse number 46671000)
  - 9: Waste set 1 1/4" (Tellimuse number 28910DC0)
  - 9.1: Plug (Tellimuse number 07182DC0)
  - 9.2: Eccentric rod (Tellimuse number 07052000)
  - 10: Coupling nut 1/2" x 14.5 mm (Tellimuse number 1290200M)\*
  - 11: Mounting wrench (Tellimuse number 19017000)\*
  - 12: Eccentric rod (Tellimuse number 07341000)\*
- \* Lisatarvikud