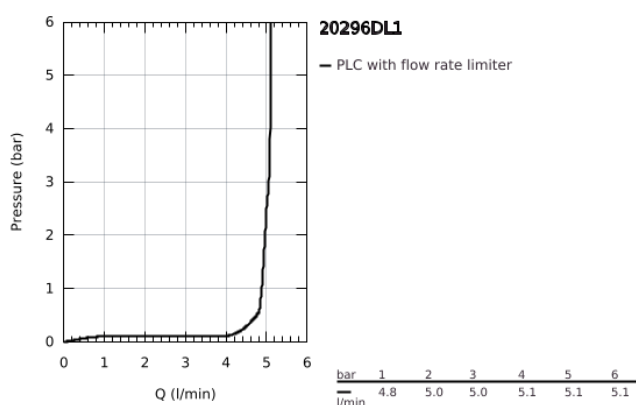
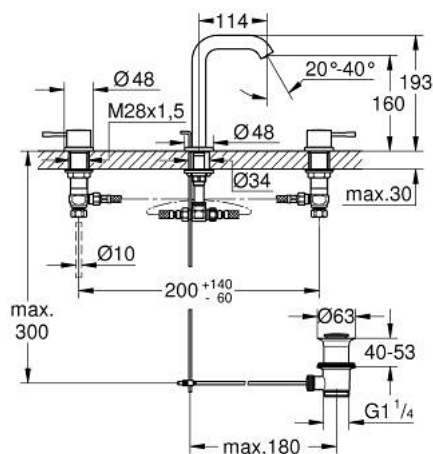


## 20 296 DL1 ESSENCE THREE-HOLE BASIN MIXER 1/2" M-SIZE

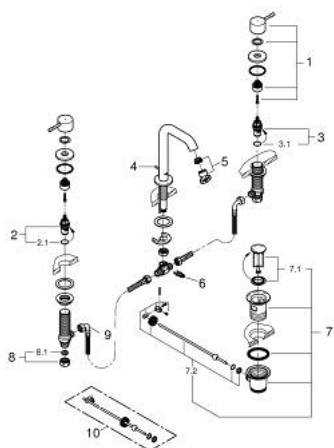


### TOOTE KIRJELDUS

- Värvus: brushed warm sunset
- ceramic headparts 1/2", 90°
- GROHE Long-Life finish
- GROHE Water Saving - Less water, perfect flow
- GROHE Water Saving mousseur 5.7 l/min
- GROHE AquaGuide adjustable mousseur
- pop-up waste set 1 1/4"
- pressure-proof, flexible connection hoses between spout and side valves



## 20 296 DL1 ESSENCE THREE-HOLE BASIN MIXER 1/2" M-SIZE



### VARUOSAD, august 2023 – nüüd

- 1: Essence pair of handles (Tellimuse number 48330DL0)
- 2: Ceramic headpart, 1/2" (Tellimuse number 45882000)
- 2.1: O-ring Ø 18.2 x Ø 1.7 (Tellimuse number 0392400M)
- 3: Ceramic headpart, 1/2" (Tellimuse number 45883000)
- 3.1: O-ring Ø 18.2 x Ø 1.7 (Tellimuse number 0392400M)
- 4: Pop-up rod (Tellimuse number 65196DL0)
- 5: Mousseur (Tellimuse number 48270000)
- 6: Fixing clamp (Tellimuse number 6554100M)
- 7: waste set basin 1 1/4" (Tellimuse number 28910DL0)
- 7.1: Plug (Tellimuse number 07182DL0)
- 7.2: Eccentric rod (Tellimuse number 07052000)
- 8: Coupling nut 1/2" (Tellimuse number 1290100M)
- 8.1: Fibre seal Ø 18,5 x Ø 12 x 2 (Tellimuse number 0138900M)
- 9: Flexible connection hose (Tellimuse number 45704000)
- 10: Eccentric rod (Tellimuse number 07341000)\*

\* Lisatarvikud