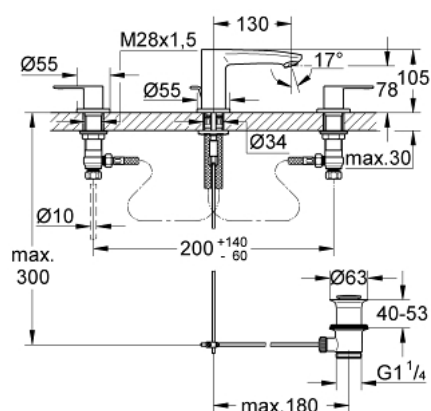


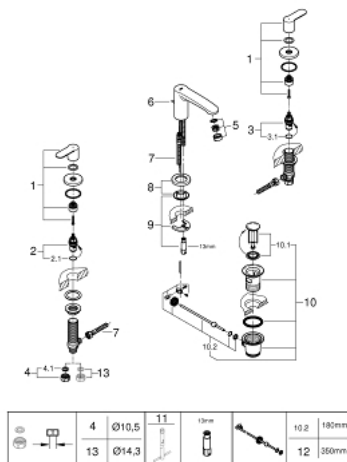
## 20 208 002 EUROSTYLE COSMOPOLITAN THREE-HOLE BASIN MIXER S-SIZE



### TOOTE KIRJELDUS

- Värvus: chrome
- ceramic headparts 1/2", 90°
- GROHE Long-Life finish
- GROHE FastFixation installation system with centering support
- spout with mousseur
- pop-up waste set 1 1/4"
- pressure-proof, flexible connection hoses
- pressure-proof, flexible connection hoses between middle-body and side valves

## 20 208 002 EUROSTYLE COSMOPOLITAN THREE-HOLE BASIN MIXER S-SIZE



### VARUOSAD, november 2021 – nüüd

- 1: Handle pair (Tellimuse number 48309000)
- 2: Ceramic headpart, 1/2" (Tellimuse number 45882000)
- 2.1: O-ring Ø 18.2 x Ø 1.7 (Tellimuse number 0392400M)
- 3: Ceramic headpart, 1/2" (Tellimuse number 45883000)
- 3.1: O-ring Ø 18.2 x Ø 1.7 (Tellimuse number 0392400M)
- 4: Coupling nut 1/2" (Tellimuse number 1290100M)
- 4.1: Fibre seal Ø 18,5 x Ø 12 x 2 (Tellimuse number 0138900M)
- 5: Mousseur (Tellimuse number 13929000)
- 6: Pop-up rod (Tellimuse number 46739000)
- 7: Connection hose (Tellimuse number 46255000)
- 8: Base plate (Tellimuse number 48165000)
- 9: Shank mounting kit (Tellimuse number 46671000)
- 10: Waste set 1 1/4" (Tellimuse number 28910000)
- 10.1: Plug (Tellimuse number 07182000)
- 10.2: Eccentric rod (Tellimuse number 07052000)
- 11: Mounting wrench (Tellimuse number 19017000)\*
- 12: Eccentric rod (Tellimuse number 07341000)\*
- 13: Coupling nut 1/2" x 14.5 mm (Tellimuse number 1290200M)\*

\* Lisatarvikud