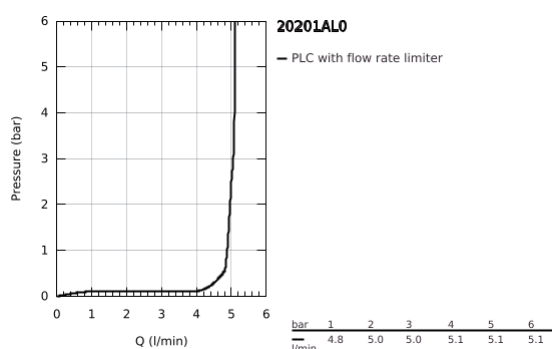
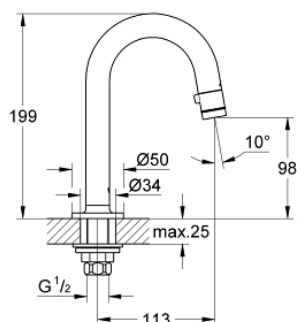


20 201 AL0 UNIVERSAL PILLAR TAP 1/2"

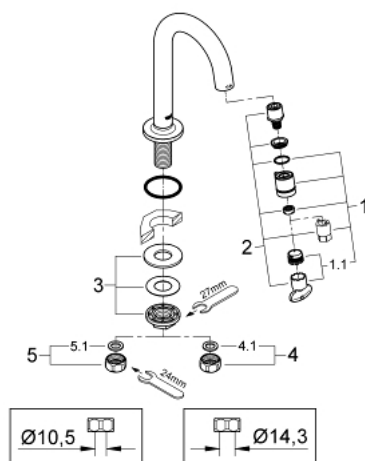


TOOTE KIRJELDUS

- Värvus: brushed hard graphite
- C-spout
- flow-stop mousseur
- ceramic disk headpart
- union nut 1/2"
- with 10.5 mm drilling
- GROHE Long-Life finish
- GROHE Water Saving - Less water, perfect flow
- maximum flow rate (at 3 bar): 5 l/min
- projection 113 mm



20 201 AL0 **UNIVERSAL PILLAR TAP 1/2"**



VARUOSAD, oktoober 2019 – nüüd

- 1: Handle (Tellimuse number 48041AL0)
- 2: Headpart (Tellimuse number 48042000)
- 3: Shank mounting kit (Tellimuse number 45004000)
- 4: Coupling nut 1/2" x 14.5 mm (Tellimuse number 1290200M)
- 4.1: Fibre seal Ø 18,5 x Ø 12 x 2 (Tellimuse number 0138900M)
- 5: Coupling nut 1/2" (Tellimuse number 1290100M)
- 5.1: Fibre seal Ø 18,5 x Ø 12 x 2 (Tellimuse number 0138900M)