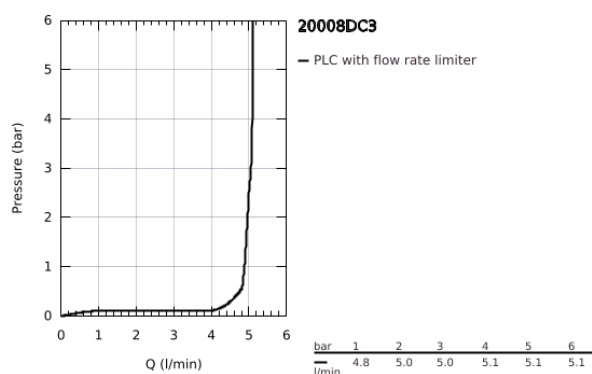
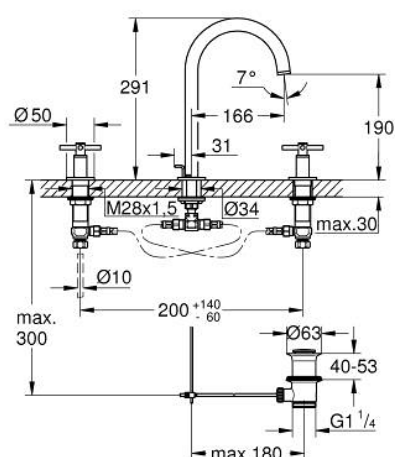


20 008 DC3 **ATRIO THREE-HOLE BASIN MIXER 1/2"** **M-SIZE**

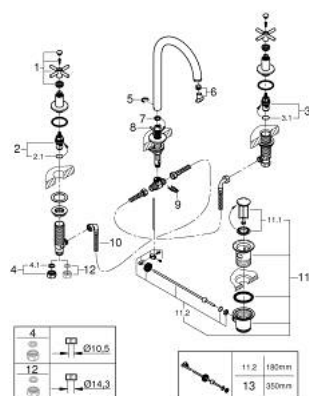


TOOTE KIRJELDUS

- Värvus: supersteel
- ceramic headparts 1/2", 90°
- GROHE Long-Life finish
- GROHE EcoJoy 5.7 l/min laminar mousseur
- swivel tubular spout with mousseur and stop limiter
- pop-up waste set 1 1/4"
- pressure-proof, flexible connection hoses between spout and side valves
- with cross handles
- Two different sets of caps included. One set with "H" and "C" marking, one set without marking.



20 008 DC3 ATRIO THREE-HOLE BASIN MIXER 1/2" M-SIZE



VARUOSAD, aprill 2017 – nüüd

- 1: Cross handles (Tellimuse number 18026DC3)
- 2: Ceramic headpart, 1/2" (Tellimuse number 45882000)
- 2.1: O-ring Ø 18.2 x Ø 1.7 (Tellimuse number 0392400M)
- 3: Ceramic headpart, 1/2" (Tellimuse number 45883000)
- 3.1: O-ring Ø 18.2 x Ø 1.7 (Tellimuse number 0392400M)
- 4: Coupling nut 1/2" (Tellimuse number 1290100M)*
- 5: Safety ring (Tellimuse number 4826600M)
- 6: Laminar flow straightener (Tellimuse number 48408000)
- 7: Sealing washer (Tellimuse number 0128500M)
- 8: Pop-up rod (Tellimuse number 65196EN0)
- 9: Fixing clamp (Tellimuse number 6554100M)
- 10: Flexible connection hose (Tellimuse number 45704000)
- 11: Waste set 1 1/4" (Tellimuse number 28910DC0)
- 11.1: Plug (Tellimuse number 07182DC0)
- 11.2: Eccentric rod (Tellimuse number 07052000)
- 12: Coupling nut 1/2" x 14.5 mm (Tellimuse number 1290200M)*
- 13: Eccentric rod (Tellimuse number 07341000)*

* Lisatarvikud